

## VicTrack Shares Spatial Property Information Online



### RAILMAP SOLUTION ENABLES GOVERNMENT AGENCIES, PRIVATE RAIL OPERATORS AND CONTRACTORS TO EASILY ACCESS LEASE AND UTILITIES DATA

#### THE CHALLENGE:

In the state of Victoria, Australia, a change of government policy saw that passenger and rail freight transport services would be delivered using private companies. As the owner of the majority of Victoria's rail infrastructure, VicTrack faced the challenge of sharing its extensive property spatial database of the rail land - approx 5,000km – with multiple stakeholders including private companies, government agencies and others.

Information in this database included land leased to customers, many for non-related rail operations. It also included information on the location of licences for utility companies to install services on or across the rail land; other information included the location of rail tracks, platforms and buildings.

This property database was also used in the privatisation process to define the land that would be leased to the various rail operators. Today this database tracks amendments to the boundaries of these leases due to rail infrastructure improvements and rail land developments. VicTrack required a solution to disseminate this information easily and without imposing a demand on resources.

#### THE PROJECT OBJECTIVES:

To implement a Web-based solution to share information from VicTrack's property spatial database with multiple stakeholders.

#### THE SOLUTION:

RailMap: An online resource that provides spatial information on leases and utilities that lie within the boundaries of 5,000km of VicTrack's rail land.

#### PROFILE:

**Name** – VicTrack Access

**Web site** – [www.victrack.com.au](http://www.victrack.com.au)

VicTrack owns the majority of Victoria's rail and tram fixed infrastructure aside from the Spencer Street Station Precinct, privately owned sidings and certain tourist lines. VicTrack's primary role is to grow and add value to the assets under its control, whilst providing broad benefits to its shareholder and contributing to the overall improvement of transport amenities and services across the state.

**Total revenue** – \$262.5m AUD

**Total expenditure** – \$301.7m AUD

**Net Profit / (Loss)** – \$39.2 AUD

**Net Cash Inflow from**

**Operating Activities** – \$12.1m AUD

**Total Assets** – \$6,314.9m AUD

**Total Liabilities** – \$1,005.3m AUD

**Net Assets** – \$5,309.6m AUD

**Total Staff** – 108

#### KEY BENEFITS:

The GeoMedia and GeoMedia WebMap software provided an integrated environment that allowed the spatial data and the Web environment to be modified using the same software and skill sets. This provided a streamlined solution and also kept costs to a minimum.

#### PRODUCTS USED:

- GeoMedia Professional
- GeoMedia WebMap
- Oracle

“ Intergraph's technology was essential in developing a customised solution to meet a broad range of needs, with a convenient and cost effective solution. ”

*Scott Oldfield, GIS Manager, VicTrack*

## THE BACKGROUND:

VicTrack selected a solution from Intergraph using GeoMedia Professional and GeoMedia WebMap with an Oracle database. The solution required two separate environments to reduce the security risk to VicTrack's internal systems posed by the Internet. An internal environment interfaces to VicTrack's other property systems such as the Lease Management system, Service Crossings system, and Land Tenure system. This is also where geospatial technology users edit spatial data using GeoMedia Professional. The second environment uses GeoMedia WebMap and Oracle to provide the GIS Internet application 'RailMap'. Data from the internal systems is published to the RailMap database each night.

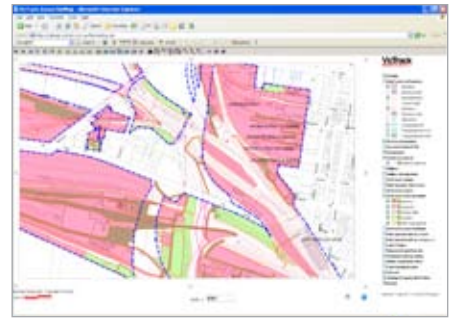
RailMap requires user account authorization to identify the individual user. The system then provides access to selected map and property information appropriate to the user's role and in accordance with privacy legislation.

In an environment where government agencies, private rail operators and their supporting contractors all perform a role in the delivery of rail passenger and freight services, the demand for information has escalated dramatically. RailMap has been a timely development that enables VicTrack to meet these demands.

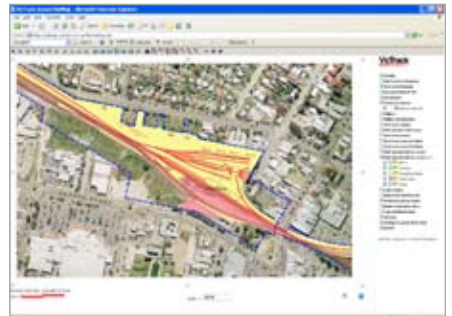
## FUTURE PLANS:

VicTrack will consider extending RailMap's information content to improve the delivery of VicTrack projects and services to customers.

For more information, visit [www.intergraph.com](http://www.intergraph.com)



VicTrack leases



Rail operator leases

---

## ABOUT INTERGRAPH

Intergraph Corporation (NASDAQ: INGR) is the leading global provider of spatial information management (SIM) software. Security organisations, businesses and governments in more than 60 countries rely on the company's spatial technology and services to make better and faster operational decisions. Intergraph's customers organise vast amounts of complex data into understandable visual representations, creating intelligent maps, managing assets, building and operating better plants and ships, and protecting critical infrastructure and millions of people around the world.



Intergraph, the Intergraph logo, and GeoMedia are registered trademarks of Intergraph Corporation. Other brands and product names are trademarks of their respective owners. Intergraph believes the information in this publication is accurate as of its publication date. Such information is subject to change without notice and is subject to applicable technical product descriptions. Intergraph is not responsible for inadvertent errors.