

SmartPlant® Isometrics



AUTOMATIC PIPING ISOMETRICS FROM SKETCHES

SmartPlant® Isometrics, powered by ISOGEN®, is a simple-to-use yet powerful Microsoft® Windows-based, pipe-sketching application. Formerly known as I-Sketch™, SmartPlant Isometrics is fast becoming the first choice of piping engineers and designers for producing industry-standard isometric drawings quickly and cost-effectively.

KEY FEATURES

- Enables sketching of individual pipelines or piping systems in only minutes and generation of isometric drawings in seconds
- Includes templates for production of check, fabrication, and erection-type drawings
- Integrates with all of the leading 3D plant design systems
- Includes time-saving pipe editing capabilities featuring automatic insertion of gaskets, flanges, and bolts
- Includes standard ANSI and DIN catalogs
- Facilitates the import of reference data held in 3D plant design systems
- Supports multiple output formats, including DXF, DWG, DGN, and IGR (SmartSketch®)
- Generates a variety of reports, including bills of materials, welding, and cut pipe length lists
- Produces industry-standard ISOGEN isometric drawings to the user's company standards
- Offers SmartPlant License Management

Designed to meet the design and documentation challenges of EPCs, fabricators, and owner operators, SmartPlant Isometrics is a versatile 2D design product playing an important role in the production and transfer of piping data along the Digital Isometric Value Chain.

PRODUCE PIPING ISOMETRICS IN MINUTES

Design time equals money. Why spend hours producing isometric drawings using paper and pencil or 2D CAD systems when you can use SmartPlant Isometrics and do it in minutes? SmartPlant Isometrics is simple to use and easy to learn, requiring minimal training. You simply sketch the pipe; add any desired components such as flanges, valves, gaskets, and bolts; dimension the pipe; and then let SmartPlant Isometrics do the rest.

Isometric drawing templates provided with SmartPlant Isometrics include check, final, fabrication only, erection only, final weld information, final with cutting list information, and overview. SmartPlant Isometrics is also available in all major languages, including English, German, French, Spanish, Italian, Czech, Korean, Japanese, and Chinese.

PRODUCE PIPING SYSTEM ISOMETRICS

SmartPlant Isometrics enables the piping engineer to design and produce isometrics for individual pipelines, several pipelines designed together in one session, or complete piping systems, providing piping data input to stress analysis applications, or aiding the inspection, testing, and commissioning of installed pipelines. Additionally, IDFs or PCFs from any ISOGEN-compliant system can be merged together to produce complete piping system isometrics.

REALIZE A RAPID RETURN ON INVESTMENT

SmartPlant Isometrics provides dramatic productivity gains for piping isometric production. It takes only minutes to sketch a piping system in SmartPlant Isometrics, and the isometric drawings with full bills of materials are then produced in seconds. Using 2D CAD packages or paper and pencil to draw isometrics usually takes between four and eight hours. Considerable cost savings and a rapid return on investment can be realized when using SmartPlant Isometrics for either new design or as-building projects.

MARK UP AS-DESIGNED ISOMETRICS

Checking the accuracy of existing piping data is easy with SmartPlant Isometrics. Using the Import feature, as-designed pipes from any ISOGEN-compliant plant design system can be imported. Using SmartPlant Isometrics on a ruggedized tablet PC device, you can walk-down the pipelines in the field, marking up the original as-designed piping data to reflect the real-world, as-built status of the pipes. Finally, new isometrics documenting plant conditions can be produced.

DOCUMENT AS-BUILT PIPING SYSTEMS

When isometric documents do not exist, SmartPlant Isometrics can be used to capture as-built piping systems electronically – it's no longer necessary to use pencil and paper. You can simply sketch the piping system directly into SmartPlant Isometrics on a rugged tablet device in the field, and the application produces all of the required as-built isometric drawings and bills of materials.

INTEGRATE WITH LEADING PLANT DESIGN SYSTEMS

SmartPlant Isometrics automates the conversion of reference data from a variety of plant design systems. Following a brief implementation period during which the specific structure of the data is described to the software, the conversion process takes only minutes. SmartPlant Isometrics' ability to receive reference data in this way allows it to work closely with leading 3D plant design systems.

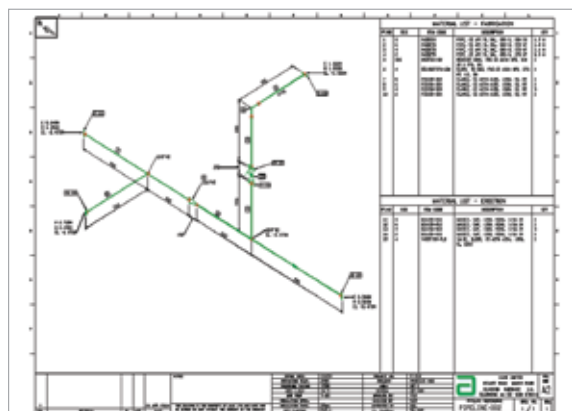
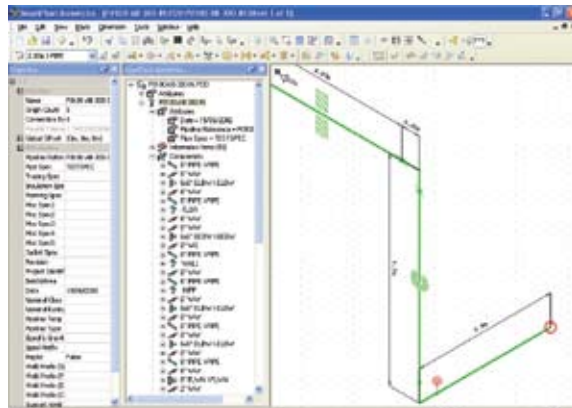
Reference data held in Intergraph's SmartPlant Reference Data application can also be transferred to SmartPlant Isometrics, ensuring consistency of design and control of the materials and piping specifications used by engineers on projects.

VISUALIZE PIPING DATA IN 3D

Using its integral 3D view, interactively visualize pipelines designed in SmartPlant Isometrics, or IDF or PCF files from any other ISOGEN-compliant system, as scaled 3D models. Any number of files can be visualized simultaneously to create a 3D model of the entire piping system, enabling pipes designed in close proximity to one another to be visually inspected to detect clash problems between new and existing pipework.

INTERFACE PIPING DATA WITH DOWNSTREAM IT SYSTEMS

Interface SmartPlant Isometrics-generated piping report data with almost any downstream IT system, such as material control, procurement, workshop, and weld management systems, SmartPlant Materials, Oracle, SAP®, Microsoft Excel- or Access-based systems, or other legacy systems.



ABOUT INTERGRAPH

Intergraph Corporation is the leading global provider of spatial information management (SIM) software. Security organizations, businesses, and governments in more than 60 countries rely on the company's spatial technology and services to make better and faster operational decisions. Intergraph's customers organize vast amounts of complex data into understandable visual representations, creating intelligent maps, managing assets, building and operating better plants and ships,

and protecting critical infrastructure and millions of people around the world.

For more information, visit www.intergraph.com.

