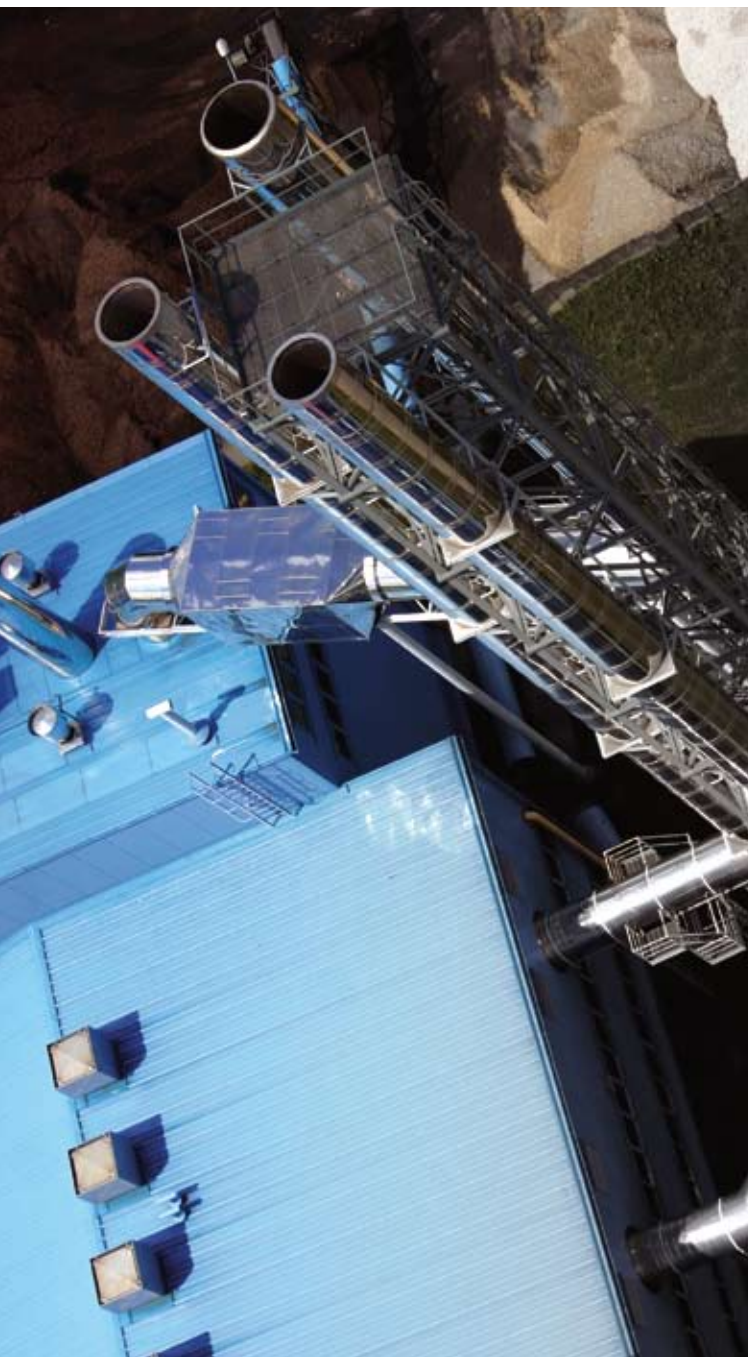


THE FUTURE OF ENGINEERING

FLYPORTEN KONFERANSE SENTER
17. AND 18. NOVEMBER 2009



INTERGRAPH PROCESS, POWER & MARINE

Intergraph PP&M is the world's leading provider of enterprise engineering software to the process, power and marine industries. Putting the power behind the promise of helping customers better supply the vital products we count on every day – such as energy, fuels, metals, pharmaceuticals and consumer goods.

THE FUTURE OF ENGINEERING - TODAY

Intergraph provides improved operational excellence and safety in the power generation, oil and gas, and commercial shipbuilding markets.

Intergraph PP&M has been a technology innovator in the process, power, and marine industries for more than 20 years. We are the world's leading provider of enterprise engineering software for the design, construction, and operation of plants, ships, and offshore facilities. Engineering, procurement and construction (EPC) firms and owner/operators in more than 60 countries around the world depend on our software to increase productivity and provide for safe and clean operations. Our customers use our software to design, build and operate many of the world's largest and most elaborate industrial facilities.

As the industry's market leader, Intergraph is recognised around the world, and our commitment to customer success has earned the trust of our industry. Through a tradition of technical innovation and deep industry expertise, we continue to lead our industry with superior software, providing our customers the future of engineering – today.

We are the acknowledged leader in 3D engineering design software and process engineering tools (PET) according to a recent research report issued by ARC Advisory Group. As the overall PET leader, Intergraph was ranked first in key global regions and process industries, as well as in functionality such as 3D engineering design. This report validates why our customers have rapidly adopted Intergraph's SmartPlant Enterprise across 3D design and the other engineering disciplines. Our global customer base experiences a quick return on their investments, increased productivity and streamlined operations resulting in shortened project timelines, all of which give them a competitive edge in today's challenging economic times.

Many of the world's leading plants are built using Intergraph PP&M solutions. Intergraph SmartPlant Enterprise software suite offers EPC firms and owner/operators a full enterprise solution that manages engineering design and data critical to physical plant assets and integrates engineering with other businesses and operational systems. SmartPlant Enterprise is a low-risk, scalable solution that increases productivity through work sharing and reduces plant design errors while improving project execution, handover, operational, and maintenance efficiency throughout the plant life cycle.

WorleyParsons, a global project services provider, entered into a Global Alliance Agreement with Intergraph to facilitate the standardisation of business solutions across its globally located operations. The past year has seen WorleyParsons significantly increase its adoption of Intergraph enterprise engineering software, much of it centred on the SmartPlant Enterprise engineering and design solution. With 118 offices in 38 countries, the Australian-based company provides technical, project, and operational support services to customers in the hydrocarbons, minerals and metals, power, and infrastructure sectors, and lists some of the world's largest energy companies as clients.

Petroleo Brasileiro SA, the Brazilian international energy company, standardised on Intergraph's offshore engineering and management software. The world's eighth largest oil company and a longtime Intergraph customer, Petrobras is fully adopting the SmartPlant software suite of 3D modelling and visualisation, engineering and schematics, information and materials management, and project controls solutions to more quickly and efficiently develop, operate, and maintain its fixed offshore drilling platforms, semi-submersibles, and FPSOs. Petrobras has already used Intergraph solutions for ten FPSOs, four semi-submersible floating production platforms, one gas platform, and one re-pumping platform.

Tsuneishi Shipbuilding Company standardised on the Intergraph SmartMarine Enterprise suite of 3D engineering design and data management solutions to optimise design efficiency and increase productivity. In committing to the entire SmartMarine Enterprise suite, Tsuneishi will now have a comprehensive set of integrated solutions to manage its shipbuilding operations – from early stage design technologies to next-generation 3D design and manufacturing capabilities, in addition to efficiency-boosting materials management and production programs. SmartMarine Enterprise streamlines marine outfitting and structure design processes and provides all of the functionality needed to design and build many different types of marine facilities, including commercial and navy ships, offshore platforms, and floating production, storage, and offloading (FPSO) vessels.

Conference Agenda November 17th 2009

Time	Presentation Titles and Locations		
8:30	Doors Open. Registration, refreshments, networking and product demonstrations - Exhibition area		
	Opening Keynotes - Room 18/19 (C)		
9:00	C1 - Welcome and introduction to the conference, Kevin Holmes, Vice President North Western Europe, Intergraph		
9:30	C2 - The Future of Engineering - Mirko Stock, Vice President, Integrated Solutions & Deployment Support, Intergraph		
10:30	C3 - Experience with SmartPlant and SmartMarine; from implementation to project delivery, Terje Ørbeck, CAD System Manager, Grenland Group		
11:15	Break with refreshments - Exhibition area		
	EPC Track (E) Room 18/19	Owner Operator (O) Room 16 /17	Customer presentation/ Product Update Track (P) Room 14/15
11:30	E1 - Smart Project Execution with Engineering and Schematics, Frank Joop, Technical Director, Intergraph	O1 - Reducing project costs, schedule and risks through improved management of change, technical interfaces, site queries and non-conformities, Adrian Park, Global Technical Director Owner Operator Solutions, Intergraph	P1 - Bättre koll på anläggningen genom laserscanning, Anders Apelgren, Industri Prows AB, SmartPlant Site Coordinator hos Nynäs AB
12:15	Networking Lunch and Product Demonstrations - Exhibition area		
13:30	E2 - Next-Generation 3D design for offshore, Arne Monsholm, Vice President, Global Business Development (Offshore), Intergraph	O2 - Relieving the pain of handover from projects and legacy systems - Validation, Transformation and Loading (VTL), a new solution offering, Marinko Laban, Project Manager, Intergraph	P2 - SmartPlant P&ID product update & 3D integration, Frank Joop, Technical Director, Intergraph
	EPC Track (E) Room 18/19	Owner Operator (O) Room 16 /17	Product Update Track (P) Room 14/15
14:15	E3 - Sub-contract management, Chris Why, Business Development Manager, Intergraph	O3 - Reference Data Library, Oddvar Skoland, Conoco Phillips Norge	P3 - Information management - SmartPlant Foundation, John Kidd, SPFoundation Product Manager, Intergraph
15:00	E4 - DNV, Niels Leikvang, Sales Executive Det Norske Veritas	O4 - Reducing operating costs and improving plant safety and plant up-time with solutions for the operating plant, Adrian Park, Global Technical Director Owner Operator Solutions, Intergraph	P4 - SmartPlant 3D product update & workshare between multiple offices, David Whittle, Business Development Manager EMIA, SmartPlant 3D and Layout, Intergraph
15:45	Break with refreshments - Exhibition area		
	Closing Keynote - Room 18/19 (C)		
16:15	C4 - Closing keynote - Value of SmartPlant Enterprise Across the EPC and O/O Life Cycle, Mirko Stock, Vice President, Integrated Solutions & Deployment Support, Intergraph		
17:00	Conference Close - Evening event begins at 18:30 - Dinner around 20:00		

Conference Agenda November 18th 2009

Time	Presentation Titles and Locations		
8:30	Doors Open. Registration, refreshments, networking and product demonstrations - Exhibition area		
	Keynotes - Room 18/19 (C)		
9:00	C5 - SmartPlant Construction Integrated Construction Planning - Improving Capital Project Construction Efficiency, Chris Why, Business Development Manager, Intergraph		
9:45	C6 - CAXperts, Trimble, Leica Geosystems, Rolta, Desurvey, Hazid (10 min. presentation)		
10:30	Break with refreshments - Exhibition area		
	EPC Track Room 18/19	Owner Operator (O) Room 16 /17	Product Update Track Room 14/15
11:00	E5 - Implementasjon og bruk av SmartPlant Foundation i et engineering selskap, Øivind Hansen, SPF manager, Fabricom og Stein Roalkvam, Application Engineer, Intergraph	O5 - Reducing the cost of creating and updating piping isometric asset documentation in operations and maintenance, Paul Martin, Business Development Manager, Intergraph	P5 - Material management and project cost control, Chris Why, Business Development Manager, Intergraph
11:45	E6 - Bruk av SmartPlant Foundation mot sluttkunde med fokus på Life Cycle Information and safe handover, Geir Arne Wilberg, Engineering Application Manager, Aibel Room 18/19		P6 - Increasing the efficiency of conceptual design, David Whittle, Business Development Manager EMIA, SmartPlant 3D and Layout, Intergraph
12:30	Networking Lunch and Product Demonstrations - Exhibition area		
	Technical User Forum 3D Room 18/19	Technical User Forum 2D Room 16/17	Technical User Forum Instrument & Electrical Room 14/15
13:00	Agenda will be published soon	Agenda will be published soon	Agenda will be published soon
16:00	Conferenec Close		

Conference Session Details

DAY 1 - November 17th

WELCOME AND INTRODUCTION TO THE CONFERENCE

09:00 - C1 ROOM 18/19 KEVIN HOLMES

We are very proud to present Kevin Holmes, Vice President North Western Europe opening the Intergraph PP&M Scandinavia 2009 conference.

ENGINEERING OF TOMORROW – TODAY

09:30 - C2 ROOM 18/19 MIRKO STOCK

The engineering of a process plant, offshore facility, or ship is a complex but fascinating task. Project execution begins with making many assumptions and goes all the way to refining the final design, with input from the many different disciplines and vendors involved in the process.

Concurrent engineering and execution with various locations from around the globe add further challenges. In this session, learn how Intergraph SmartPlant® Enterprise technology has brought the industry to a new level of design. No one can wait until later in the schedule to start design. As more information becomes available, there are fewer changes, meaning fewer hours expended and fewer errors. Modification and manual design verification can then be minimized. With SmartPlant Enterprise solutions, you can significantly automate your design, making it possible to push designs later in the schedule. This increases design quality and lowers cost and project execution risk. By using these automation tools, you can apply design consistency and best practices.

EXPERIENCE WITH SMARTPLANT AND SMARTMARINE; FROM IMPLEMENTATION TO PROJECT DELIVERY

10:30 - C3 ROOM 18/19 TERJE ØRBECK

Grenland made a decision to start implementing SmartPlant® Enterprise early 2006. Now, 2 ½ years, and several projects later, Grenland Group's Terje Ørbeck takes us through the positive outcomes of this implementation. The challenges related to implementing a new and integrated design and engineering system in a conservative industry sector will also be discussed. Grenland Group has successfully used most of the SmartPlant® family, including SmartPlant® 3D and SmartMarine 3D and has seen some significant productivity improvements during project execution

EPC Stream Session Details

SMART PROJECT EXECUTION WITH ENGINEERING AND SCHEMATICS

11:30 E1 ROOM 18/19 FRANK JOOP

Frank Joop will introduce Smart Project Execution with engineering and schematics. Executing projects is a high risk business. Projects with a CAPEX of Billions of Dollars and ever shorter schedules increase the pressure and challenges faced by EPCs in managing these projects successfully in terms of design, construction, commissioning and process technology. Intergraph offers long experience, innovation and market leading solutions to help cope with these challenges. During this session we will share how the engineering and schematics products can offer differentiators that can make your company successful in complex project execution.

NEXT-GENERATION 3D DESIGN FOR OFFSHORE

13:30 E2 ROOM 18/19 ARNE MONSHOLM

No PowerPoint slides in this session! Come and see a live demonstration of SmartMarine 3D V2009, with special focus on offshore design capabilities. Topics will include structural design, hole/penetration management, fabrication/installation planning, automated drawing production, and more. Don't miss this opportunity to see how SmartMarine 3D can provide significant business benefits for offshore projects.

EPC Stream - Session Details Continued

SUB CONTRACT MANAGEMENT

14:15 E3 ROOM 18/19 CHRIS WHY

Subcontracts can cost 30% - 40% of your total construction project. Looking for new solutions to increase efficiency and decrease hours spent developing, monitoring and managing your subcontracts is time well spent! Intergraph's new extension to SmartPlant® Materials specifically for Subcontract Management gives you the power to save time and money, and increase your ability to maintain control over daily subcontractor administration. With Intergraph's subcontract management solution, you can:

- Reduce project risk
- Build a strategy and responsibility matrix to enhance up-front planning of subcontract packages
- Utilise engineering design basis to initiate a 'Scope of Work' creation
- Allow subcontractors and suppliers to submit critical real-time information relating to registration, quotations, agreements, progress, and requests for payment
- Collaborate more effectively across the engineering, procurement and construction life-cycle for the subcontracts
- Streamline your processes and improve the quality of your deliverables
- Increase transparency and implement better decision support
- Integrate the subcontract and material management processes within a single industry leading solution for better project delivery

NAUTICUS EARLY DESIGN

15:00 E4 ROOM 18/19 NIELS LEIKVANG AND MATIAS SCHULT

Does $1+1=4$? It does so when it comes to complex design, analysis and verification. There are few solutions that can do this multitude of tasks within one system. Intergraph and DNV have done exactly so - combined SmartPlant® + SmartMarine + DNV's analysis and verification solutions into a single solution – Nauticus Early Design (NED). During this session we tell you about this unique cooperation and demonstrate examples of design efficiency by reducing manual design/analysis work and verification and corrective redesign – all within one solution.

Owner/ Operator - Session Details

REDUCING PROJECT COSTS, SCHEDULE AND RISKS THROUGH IMPROVED MANAGEMENT OF CHANGE, TECHNICAL INTERFACES, SITE QUERIES AND NON-CONFORMITIES

11:30 01 ROOM 16/17 ADRIAN PARK

On average, CAPEX projects in the process, power and marine industries exceed their budgets by 20-30% and significant delays in start-up are common. This session focuses on a number of key, critical project management workflows that Intergraph delivers as templated best practice work processes to help reduce CAPEX and costly delays to project schedules. This session is aimed at owner operators, project management contractors and EPCs that need to manage change, non-conformity queries and technical interfaces more effectively.

RELIEVING THE PAIN OF HANDOVER FROM PROJECTS AND LEGACY SYSTEMS - VALIDATION, TRANSFORMATION AND LOADING (VTL), A NEW SOLUTION OFFERING

13:30 02 ROOM 16/17 MARINKO LABAN

Managing the handover of data and documentation from projects is a major activity. Typically, for a \$1 billion CAPEX plant, it costs \$10-20m and takes a year to complete tying-up scarce, skilled resources. To help address both the handover of project data and the migration of legacy data, Intergraph has launched a new, highly-generic data validation, transformation and loading tool. VTL provides a flexible staging area where data may be imported, transformed and subjected to validation against end-user defined business rules. Auditable traceability of validation performed, quality reports, export and transformation of selected data to target systems and end-to-end automation of the whole process are supported.

Owner/ Operator - Session Details Continued

CONOCO PHILLIPS NORGE, CLASS LIBRARY (REFERENCE DATA LIBRARY) ISO 15926

14:15 03 ROOM 16/17 ODDVAR SKOLAND

Development of the ConocoPhillips Class library and alignment with the Oil and Gas industry including ISO15926. - The fundament for Quality Assurance and integrity for all DFO/LCI information to be handed over to CoPNo operation in the time to come.

REDUCING OPERATING COSTS AND IMPROVING PLANT SAFETY AND UP-TIME WITH SOLUTIONS FOR THE OPERATING PLANT

15:00 04 ROOM 16/17 ADRIAN PARK

While owner operators are in the midst of a period of highly uncertain product demand and prices, they are increasingly focusing their efforts on what they can control to be competitive in whatever future may arise: reducing risk, plant down time and costs. Intergraph's solutions for the operating plant support these endeavours by providing templated key work processes, such as managing change, planning turnarounds, managing non-conformities and keeping both the dynamic engineering design basis and third party computerised maintenance management system up-to-date and consistent. The current status and future directions of Intergraph solution for the operating plant will be presented.

Customer Presentation/Product Update Stream - Session Details

BÄTTRE KOLL PÅ ANLÄGGNINGEN GENOM LASERSCANNING

11:30 P1 ROOM 14/15 ANDERS APELGREN

Status As-Built? Hur vet man om anläggningen är up to date?

Litet föredrag om hur laserscanning och 3d-punktmoln kan ge svar på frågorna och förenkla arbetet off-site.

SMARTPLANT® P&ID PRODUCT UPDATE AND 3D INTEGRATION

13:30 P2 ROOM 14/15 FRANK JOOP

This session will highlight the latest product updates, including SmartPlant® P&ID, SmartPlant® Instrumentation and SmartPlant® Electrical.

INFORMATION MANAGEMENT

14:15 P3 ROOM 14/15 JOHN KIDD

The session will include a power point presentation covering the recent enhancements to SmartPlant® Foundation, integration, and navigation and markup provided in the 2007.6 and 2009 releases with a brief summary of what we will be doing in the 2009.1 service pack. A selection of avi clips will be shown to demonstrate some of this functionality including the new line list application, the SmartPlant Foundation list edit, and the new 3D view control.

3D SOLUTIONS UPDATE

15:00 ROOM 14/15 DAVID WHITTLE AND ARNE MONSHOLM

This session will provide an update on current key capabilities in Intergraph's Smart 3D solutions (SmartPlant® 3D, SmartPlant® Layout, SmartMarine 3D and SmartPlant® Review) and an overview of the plans for future development.

Closing Keynote Day One

VALUE OF SMARTPLANT® ENTERPRISE ACROSS THE EPC AND OWNER/OPERATOR LIFE CYCLE

16:15 - C4 ROOM 18/19 MIRKO STOCK

The economy has substantially impacted owners, operators, and creators of complex and capital-intensive assets. Low-profit assets are being retired. Large CAPEX projects face strict profitability reassessments, and in many cases, are cancelled. Most companies are challenged to tightly manage investments and OPEX and improve project and asset margins without compromising safety or compliance. Most importantly, companies are looking for ways to come out of the current crisis stronger and more competitive. SmartPlant® Enterprise adds value across the asset life cycle. This session will demonstrate how Intergraph's SmartPlant® Enterprise helps asset O/Os improve operating margins by increasing plant uptime while boosting safety and the ability to demonstrate regulatory compliance. Plus, SmartPlant® Enterprise offers benefits on CAPEX and project duration, enabling EPCs, suppliers, and fabrication companies to improve their productivity and profitability.

DAY 2 - November 18th

Opening Keynote Day Two

SMARTPLANT® CONSTRUCTION INTEGRATED CONSTRUCTION PLANNING - IMPROVING CAPITAL PROJECT CONSTRUCTION EFFICIENCY

09:00 C5 ROOM 18/19 CHRIS WHY

The first chance to see SmartPlant® Construction a brand new tool created specifically for process, power and marine firms to more efficiently plan and manage plant, ship and offshore construction, resulting in increased productivity, accelerated project completion and reduced risk. By seamlessly integrating engineering, procurement, fabrication and site materials, SmartPlant® Construction facilitates improved work planning, Efficient information exchange for better communication and enhanced engineering and construction work processes.

EXHIBITOR PRESENTATIONS

09:45 C6 ROOM 18/19 CAXPERTS, TRIMBLE, LEICA GEOSYSTEMS, DESURVEY, ROLTA, HAZID

10 min presentations

EPC Stream - Session Details

IMPLEMENTASJON OG AV SMARTPLANT® FOUNDATION I ET ENGINEERING SELSKAP

11:30 E5 ROOM 18/19 ØIVIND HANSEN OG STEIN ROALKVAM

BRUK AV SMARTPLANT® FOUNDATION MOT SLUTTKUNDE MED FOKUS PÅ LIFE CYCLE INFORMATION AND SAFE HANDOVER

11:45 O6 ROOM 16/17 GEIR ARNE WILBERG

Owner/ Operator - Session Details Continued

REDUCING THE COST OF CREATING AND UPDATING PIPING ISOMETRIC ASSET DOCUMENTATION IN OPERATIONS AND MAINTENANCE

11:00 05 ROOM 16/17 PAUL MARTIN

Maintaining the piping asset is a critical challenge for Owners/Operators, often hindered by a lack of accurate piping documentation either because it is obsolete or completely unavailable. Even when attempts are made to introduce more stringent documentation control using traditional 2D CAD, the solution implemented can be cumbersome, resulting in piping documentation that is difficult and time consuming to update.

Intergraph meets these challenges with SmartPlant® Isometrics, a key component of Intergraph's SmartPlant® Enterprise for Owner Operators solution. This intelligent piping isometric solution utilises piping data held in an existing 3D model or, if one does not exist, can help facilitate its creation. This session will show how SmartPlant Isometrics provides a simple, fast and cost-effective way to maintain designed pipes electronically as intelligent, as-built isometrics, helping Owner/Operators to reduce the time and cost associated with updating and creating the range of piping isometric documents required to operate and maintain their plant.

Product Update Stream - Session Details

MATERIALS MANAGEMENT AND PROJECT COST CONTROL

11:00 P5 ROOM 14/15 CHRIS WHY

This session discusses the continuing market-driving development strategy, focusing on key product enhancements in 2009.

INCREASING THE EFFICIENCY OF CONCEPTUAL DESIGN

11:45 - E6 ROOM 18/19 DAVID WHITTLE

SmartPlant® Layout – A technical overview demonstrating the efficient use of the 3D model in the conceptual design stages of a project. In this presentation, you will be shown the building of a 3D model and the management of different scenarios including the auto-routing of pipelines. To complete the conceptual design, drawings and reports will be produced.

Technical User Forum Information

INSTRUMENTATION & ELECTRICAL TECHNICAL USER FORUM

LEDER: KENT RONNY HAMRE, GRENLAND GROUP

SPONSOR: BÅRD ROBSTAD, INTERGRAPH NORGE

PROCESS DESIGN & ENGINEERING TECHNICAL USER FORUM

LEDER: AINO IRENE JENSEN, HALDOR TOPSØE

SPONSOR: ARVE VÅGA , INTERGRAPH NORGE

PIPING, EQUIPMENT, HVAC, VISUALIZATION AND STRUCTURAL ENGINEERING

TECHNICAL USER FORUM

LEDER: TERJE ØRBECK, GRENLAND GROUP

SPONSORS: KNUT MELAND , INTERGRAPH NORGE

FOR MER INFORMASJON OM TECHNICAL USER FORUM TA KONTAKT MED

SPONSOR ELLER LEDER AV DIN TUF.

Venue Location and Travel Information

Venue Location

Radisson SAS Flyporten Konferansesenter, www.flyporten.no

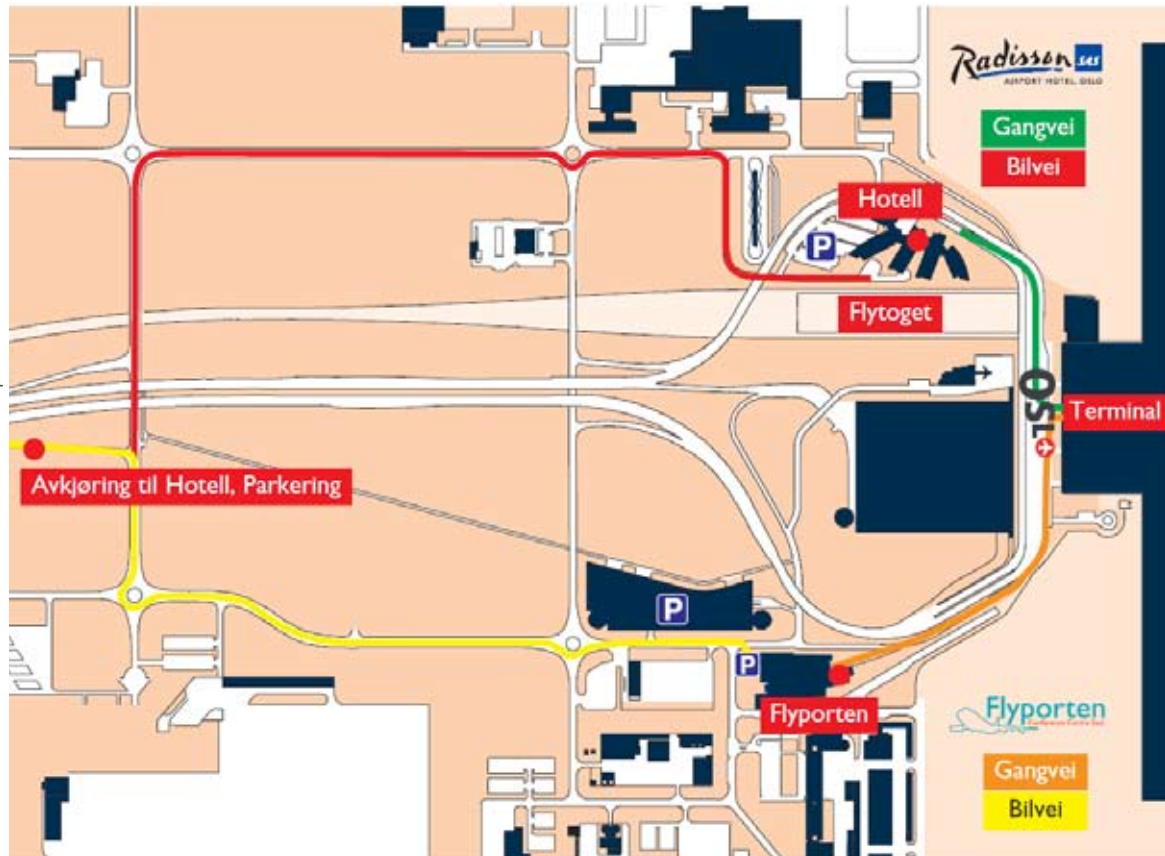
conference centre is close to Oslo Airport, Gardermoen, take left when you go out from the airport, walk five minute under roof till you reach the conference center. If you want to check into the hotel before you register for the conference, please turn right when you go out from the airport and walk five minute under roof till you reach the Radisson SAS Airport Hotel.

Travel Information

SAS Radisson Flyporten
Hotellvegen, P.O.Box 163
N-2061 Gardermoen
Norway
Tel: +47 63 93 30 00
Fax: +47 63 93 30 30
conference.airport.oslo@radisson-sas.com

Arrival aeroplane/train:
Flyporten is in walking distance from the airport- and train terminal. Just outside the arrival hall turn left and follow the signs marked Flyporten, Conference Centre East.

Arrival car:
From Oslo city center, follow E6 direction Trondheim, then main road 174 to Oslo Lufthavn Gardermoen. When seeing the illuminated parking sign and sign to hotel turn off the main road and follow the sign to OSL Flyporten through two roundabouts. Europark has car park outside the center.



Contact information in Intergraph:
Intergraph Norge AS

info-norway@intergraph.com
Mari.helgeland@intergraph.com

Mobile: +47 91 61 49 69
Office: +47 66 98 58 58

2009 Conference Sponsors and Exhibitors



CAXPERTS

www.caxperts.com

CAXperts develops standardized and customized utilities and is well known for professional IT-services which spans from business analysis, process and system architecture to system hosting, implementations, integrations and customisations to content management and project support services. All the activities are located around Intergraph's PPM world of PDS® and SmartPlant®. The specialty of CAXperts is the development of usable, workflow oriented and efficient IT-solutions. The expertise of CAXperts has been proven in innumerable projects around the world with offices in Germany, Singapore, Australia and India



LEICA GEOSYSTEMS

www.leica-geosystems.com

With close to 200 years of pioneering solutions to measure the world, Leica Geosystems products and services are trusted by professionals worldwide to help them capture, analyze, and present spatial information. Leica Geosystems is best known for its broad array of products that capture accurately, model quickly, analyze easily, and visualize and present spatial information.

Those who use Leica products every day trust them for their dependability, the value they deliver, and the superior customer support. Based in Heerbrugg, Switzerland, Leica Geosystems is a global company with tens of thousands of customers supported by more than 3,500 employees in 28 countries and hundreds of partners located in more than 120 countries around the world.



TRIMBLE

www.trimble.com

Trimble's Power, Process and Plant solutions manage, and integrate the data needed to make informed engineering and design decisions. Using these solutions, acquisition, viewing, interrogation and management of existing-conditions data and dimensional control data is streamlined into a comprehensive workflow



DET NORSKE VERITAS

www.dnv.com

Det Norske Veritas (DNV) is a global provider of services for managing risk. An independent foundation with the objective of safeguarding life, property and the environment, DNV comprises 300 offices in 100 countries, with about 9,000 employees.



DESURVEY

www.desurvey.com

At Desurvey, we take the greatest care to match the right people to the right jobs, so that individuals and their new employers benefit greatly from the placement. To this end we constantly acquire new knowledge about our markets and the way they're developing. That's why we've built up a reputation for obtaining great results for people and companies alike.



HAZID

www.hazid.com

Hazid Technologies develops and owns the intellectual property of the HAZID knowledge base software. HAZID was first developed at Loughborough University, UK, under the leadership of the late Professor Frank Lees, and continued under the ESPRIT STOPHAZ project, with valuable technical input and testing by industrial partners ICI, Snamprogetti and VTT.

The product has subsequently been fully commercialized by Hazid Technologies, which retains a strong association with Loughborough University and one of the world-leading researchers, Professor Paul Chung. Hazid Technologies partners Intergraph Corporation, a worldwide leader in process plant design software.



ROLTA

www.rolta.com

Rolta's Operational & Engineering Services Group is a leading provider of Discipline, Engineering ICT, and Tool Set services to Owner Operator, Engineering & Construction, and Shipbuilding companies worldwide. Companies rely on Rolta for: Work-share services; Detailed Engineering; 2D & 3D Modelling; Marine Design; Engineering Content Provision; Legacy Migration; SmartPlant Implementation, Infrastructure support and Oracle based Business Intelligence. Make time to visit our booth to understand how we can help you and your organisation maximise the return on your Intergraph investment.

THE POWER OF PRODUCTIVE PARTNERSHIP

Intergraph PP&M offers the most modern, complete, and integrated suite of software solutions for the process, power, and marine industries.

Our leadership position is backed by a proven track record of high-quality product development, a global customer base of industry leaders, and a worldwide sales and support network. As the leading enterprise engineering software vendor in the world, Intergraph PP&M outspends all of its competitors in research and development, investing more than \$240 million in software development throughout the past five years. This amount of investment and commitment to product innovation translates into faster productivity and increased efficiency for our customers.

Macroeconomic forces of our ever-changing global economy – from the volatility of commodity prices to the increasing demand for alternative energy sources – mean our customers require every possible advantage to differentiate themselves from their competition. We are focused on driving innovations in engineering technology, with a primary goal of providing customers products and services that improve their business. We have a strong history of developing innovative solutions that enable customers to attain a competitive advantage.

SNC-Lavalin Group, one of the world's leading engineering and construction companies, expanded its use of Intergraph SmartPlant Enterprise engineering design and data management software to streamline operations, optimise work processes, and increase productivity and profitability. After a successful SmartPlant Enterprise implementation in its Nuclear division, SNC-Lavalin enhanced its existing 3D design technology in its Light Industry and Mining and Metallurgy divisions, enabling true work sharing between regional offices and consortium partners, and adding repeatable design flexibility to its projects. SNC-Lavalin is also currently using SmartPlant software in partnership with Atomic Energy of Canada Limited (AECL) for the design of its new Generation III+ nuclear reactor ACR-1000, the upgrade of a Valero Refinery in California and other projects.

Saudi Basic Industries Corp. (SABIC), the largest and most profitable non-oil company in the Middle East

and one of the world's ten largest petrochemical manufacturers, has standardised on Intergraph SmartPlant Enterprise, including SmartPlant 3D and SmartPlant Foundation, as its engineering design and data management platform for all of its manufacturing affiliates. SABIC products include chemicals, plastics, fertilisers, and metals. SABIC will use the SmartPlant Enterprise to facilitate data handover from its EPC contractors to its affiliates' plants, assisting in every aspect of the plant life cycle including design, procurement, construction, commissioning, operation, maintenance, expansions, retrofits, and decommissioning.

Intergraph SmartPlant Enterprise offers a powerful portfolio of next-generation, best-in-class plant automation solutions that leverage critical project information and knowledge to improve and automate work processes, from the early project phases through plant operations and maintenance up to decommissioning. SmartPlant Enterprise translates advanced functionality, usability, and work process improvement concepts into tangible business benefits to shorten schedules, boost productivity, and increase engineering quality. For most projects, SmartPlant Enterprise improves plant engineering efficiency by up to 30 percent.

Intergraph SmartPlant Enterprise engineering solutions were proven instrumental in the design and successful operation of one of the world's largest, multi-billion dollar coal-fired power generation plants. East China Electric Power Design Institute (ECEPDI), renowned for its engineering expertise, designed the Yuhuan Power Plant, a 4x1000 Megawatt power plant which began generation in 2008 and is capable of supplying power to two million people every day. With a project investment cost in excess of \$2.1 billion, ECEPDI utilised SmartPlant Enterprise solutions to design the steam and water equipment, piping, and piping support for the plant. In partnership for nearly a decade, East China Electric and Intergraph implement advanced new engineering solutions to keep this dynamic power design institute in concert with its customers' needs.

Intergraph SmartPlant Enterprise offers a powerful portfolio of next-generation, best-in-class plant automation solutions that leverage critical project information and knowledge to improve and automate work processes, from the early project phases through plant operations and maintenance up to decommissioning. SmartPlant Enterprise translates advanced functionality, usability, and work process improvement concepts into tangible business benefits to shorten schedules, boost productivity, and increase engineering quality. For most projects, SmartPlant Enterprise improves plant engineering efficiency by up to 30 percent.

Intergraph SmartPlant Enterprise engineering solutions were proven instrumental in the design and successful operation of one of the world's largest, multi-billion dollar coal-fired power generation plants. East China Electric Power Design Institute (ECEPDI), renowned for its engineering expertise, designed the Yuhuan Power Plant, a 4x1000 Megawatt power plant which began generation in 2008 and is capable of supplying power to two million people every day. With a project investment cost in excess of \$2.1 billion, ECEPDI utilised SmartPlant Enterprise solutions to design the steam and water equipment, piping, and piping support for the plant. In partnership for nearly a decade, East China Electric and Intergraph implement advanced new engineering solutions to keep this dynamic power design institute in concert with its customers' needs.

Técnicas Reunidas Group, Spain's largest engineering, procurement, and construction (EPC) company dedicated to the oil and gas, refining, petrochemical, energy, and infrastructure industries, signed a long-term software agreement to use our Intergraph SmartPlant Enterprise solutions suite. As an Intergraph customer for the past 15 years, Técnicas Reunidas Group extended its commitment to Intergraph by acquiring the entire SmartPlant Enterprise software suite for project development in each of its engineering, procurement, and construction disciplines.

These are only a few of the many ways Intergraph software is having a positive impact on the lives of millions, enabling customers to leverage the power of the engineering enterprise to better supply the vital products we count on every day – such as energy, fuels, metals, pharmaceuticals and consumer goods.







Intergraph and the Intergraph logo are registered trademarks of Intergraph Corporation. Other brands and product names are trademarks of their respective owners.

Intergraph believes the information in this publication is accurate as of its publication date.

Such information is subject to change without notice and is subject to applicable technical product descriptions. Intergraph is not responsible for inadvertent errors.

©2009 Intergraph Corporation.