

INTERGRAPH® CADWORX® QUESTIONS & ANSWERS



PLANT DESIGN AT YOUR FINGERTIP

Intergraph CADWorx software improves the quality, efficiency, safety and cost effectiveness of those served by plant design and enables companies to deliver projects on time and within budget.



INTERGRAPH CADWORX

QUESTIONS & ANSWERS

Intergraph CADWorx and Analysis Solutions (Intergraph CAS) products have become the first choice among those involved in the creation of quality plant design and engineering analysis deliverables. In real-world application, Intergraph CAS products have helped reduce man-hours and costs 50% and more for designers, engineers and owner operators. Intergraph CAS offers integrated and scalable solutions that are easy to learn and use.

Contents

1. General Information

- 1.1. Who uses Intergraph CAS software?
- 1.2. What is CADWorx?
- 1.3. What are the main benefits of using CADWorx?

2. CADWorx the Right Tool

- 2.1. Why is CADWorx “Easy”?
- 2.2. Why is CADWorx “Open”?
- 2.3. Why is CADWorx “Integrated”?
- 2.4. Why is CADWorx “Scalable”?

3. Purchasing

- 3.1. What are the purchasing options?
- 3.2. What are Intergraph Global Network Partners (IGNP’s)?
- 3.3. What is an Intergraph CAS Authorized Reseller?
- 3.4. Are there FREE evaluations of CADWorx products?
- 3.5. Can CADWorx products be leased?
- 3.6. Can a live presentation be given by the local reseller or by Intergraph CAS?
- 3.7. Can an online web demo be given?
- 3.8. What are the benefits to having CADWorx Maintenance?

4. Online Resources

- 4.1. Does Intergraph CAS have an online CADWorx Blog?
- 4.2. Where can I find online CADWorx discussion forums?
- 4.3. How do customers keep informed of up-to-date product related information?
- 4.4. How can customers stay in touch with Intergraph CAS?

5. Licensing

- 5.1. What is a Hardware Lock?
- 5.2. Will my hardware lock license expire after a year?
- 5.3. Can licenses be purchased for one user?
- 5.4. Can multi seat licenses be purchased?

6. Technical Requirements

- 6.1. What are the recommended system requirements for Intergraph CADWorx Plant Professional?
- 6.2. With which AutoCAD versions is Intergraph CADWorx compatible?
- 6.3. Is Intergraph CADWorx compatible with Autodesk vertical products?
- 6.4. What is Intergraph CADWorx NOT compatible?
- 6.5. What operating software do I need?

7. Platform and System Requirements

- 7.1. Autodesk Requirements?
- 7.2. Additional requirements for 3D Modelling?

8. Product Enhancements

- 8.1. How often does Intergraph CAS release a new update to CADWorx?
- 8.2. Is CADWorx always up to date with Autodesk's AutoCAD latest release?
- 8.3. Who has access to the latest CADWorx updates and enhancements?

9. Get Involved with CADWorx

- 9.1. Can customers submit product enhancement requests directly to Intergraph CAS?
- 9.2. How are these enhancement request monitored?
- 9.3. How do I get registered to beta test CADWorx?

10. Piracy Prevention

- 10.1. What can an Intergraph CAS legitimate customer do to raise above those that pirate software?
- 10.2. Our company wants a software certification letter, who do I contact?





1. GENERAL INFORMATION

Intergraph CAS is a provider of software for multiple plant design and engineering disciplines. Intergraph CAS aims are that design and engineering should share relevant information seamlessly, thereby maintaining accuracy and improving efficiency.

1.1. Who uses Intergraph CAS software?

Nine out of ten of the world's major engineering firms and corporate owner operators use Intergraph CAS products. They know our products are accepted as industry standards for design and engineering, so they are assured of proven solutions that are used and accepted worldwide by their peers. For more product information please visit www.intergraph.com/CADWorx.

1.2. What is CADWorx?

CADWorx is a Plant Design Suite for intelligent plant design modelling, process schematics and automatic production of plant design deliverables. Please visit our [website](#) for detailed information.

1.3. What are the main benefits of using CADWorx?

The benefit of CADWorx is that this software is quick and easy to set up and use, so you can start designing right away. Thousands of mid to small size companies are benefiting from the powerful, yet scalable, solutions that Intergraph CAS develops. If you have work to do, correctly, on time, and under budget, you too should be using Intergraph CAS software.

2. CADWORX THE RIGHT TOOL

Since its introduction, CADWorx has revolutionized the plant design industry with its ease of use, flexibility, interconnectivity and scalability. This software is trusted by over 80% of the leading plant engineering companies and owner operators worldwide to deliver accurate, reliable results.

2.1. Why is CADWorx “Easy”?

CADWorx is easy to use because the software is AutoCAD based and utilizes exactly the same commands and methodology with which all AutoCAD users are already familiar. This, along with the intuitive work flow of CADWorx, assures that the large base of trained AutoCAD users can become productive within days of first encountering the product.

Likewise, the large set of template specifications and component databases shipped with the product, coupled with the product’s smooth 2D to 3D transition, database flexibility, and easy on-the-fly customization (no programming required) allows even the most casual users to easily and quickly ensure that CADWorx works exactly the way that they do (or the way they have always really wanted to).

The simplicity of CADWorx allows all projects to be fast tracked, saving hundreds of training, engineering, and design hours, not to mention administrative overhead costs. On the typical CADWorx project, plant designers find that they can start laying pipe within hours of installing the software.



TIME DOES MATTER
Short learning curve and quick startup.

“If you have basic AutoCAD knowledge you quickly get the hang of it.”

Marco Krooswijk, Mechanical Engineer at Petrogas Gas Systems,

“The benefits of the Intergraph CAS integrated approach, which we had not seen before, surprised everybody. No one had imagined how project tasks could be simplified so optimally.”

Kunal Patel, CAD Designer at JFMPE Inc.



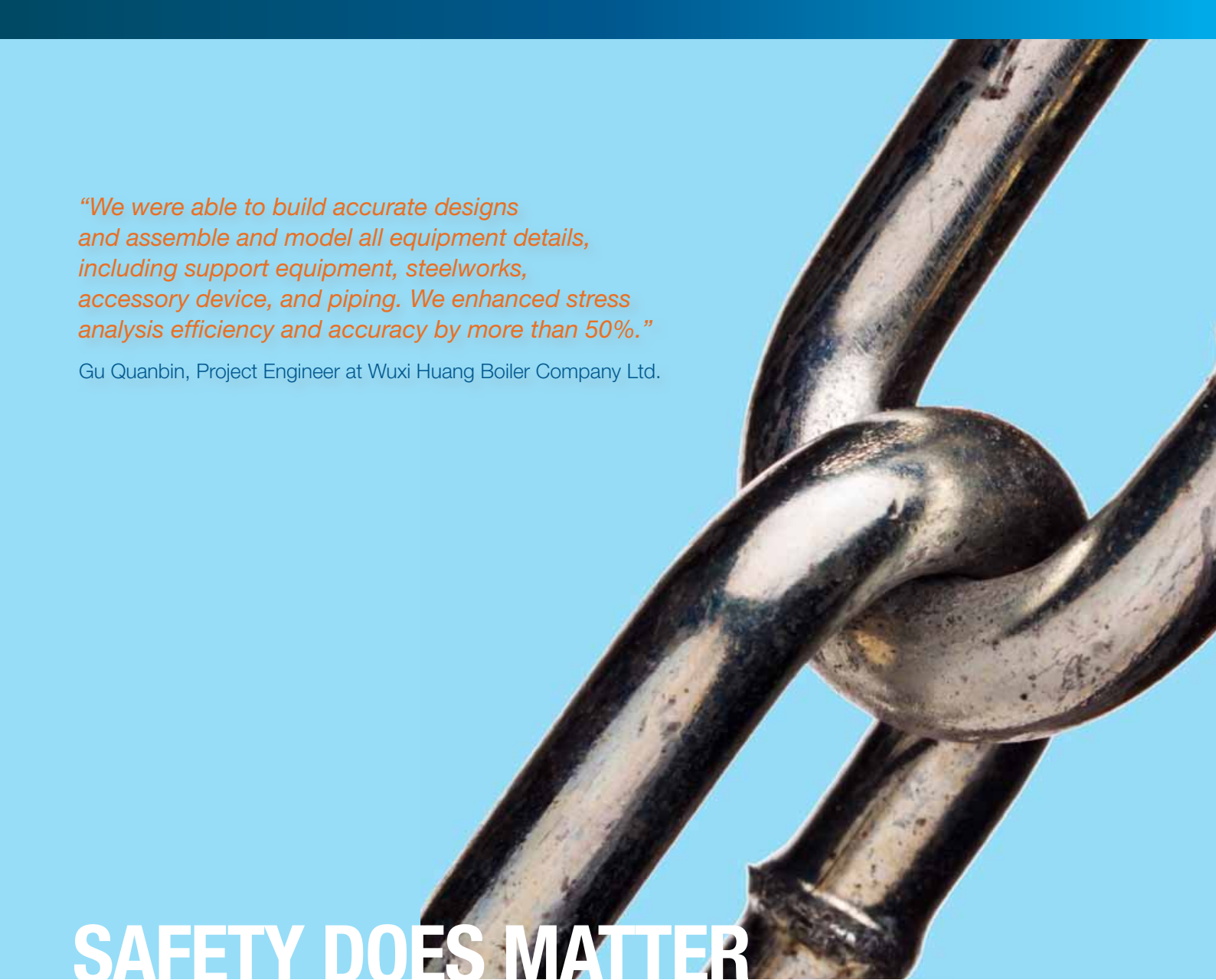
PERFORMANCE DOES MATTER

Intelligent workflow, improved productivity, and fast turnaround.

2.2. Why is CADWorx “Open”?

CADWorx is open because it can be adapted to the customer’s existing work process, eliminating the requirement of following constrictive processes found in most software. This is done both by ensuring that the product adheres to non-proprietary, easily customized database structure and by conforming to de-facto commercial standards as a means of providing interoperability with other software.

So what does this mean to you? CADWorx’s database can be quickly structured to match those used by your data warehouse or individual applications, thus becoming a natural part of the company’s ERP processes. Likewise CADWorx’ strict adherence to such commercial standards as Autodesk’s standard DWG format and Intergraph/Alias’ PCF format allows CADWorx to easily interface with the hundreds or thousands of other applications which also use those standards.



“We were able to build accurate designs and assemble and model all equipment details, including support equipment, steelworks, accessory device, and piping. We enhanced stress analysis efficiency and accuracy by more than 50%.”

Gu Quanbin, Project Engineer at Wuxi Huang Boiler Company Ltd.

SAFETY DOES MATTER

Benefit from the bi-directional link to analysis.

2.3. Why is CADWorx “Integrated”?

Intergraph CAS is unique among plant design software providers in that we are developers of both design and engineering software. This has given us the opportunity to integrate the two product families at the tightest possible level, an area in which Intergraph CAS has continued to lead the industry for the past 15 years. The intuitive bi-directional links between CADWorx and Intergraph CAESAR II pipe stress and Intergraph PV Elite vessel analysis programs allow designers and engineers to seamlessly collaborate during the project design stage.

The seamless integration allows users to maintain accurate and up-to-date drawings and models, which provides at least four benefits: 1) the “enter once-use many times” philosophy saves the time and expense of re-generating the model by each of the project’s data consumers; 2) models automatically generated from the original CADWorx 3D plant model will have much greater accuracy than would models recreated for each specific task, 3) synchronization of the design and analytical models assures engineering concurrency; and 4) timely modification of all models as changes are made by individual disciplines reduces the time and expense of plant as-building post-startup.

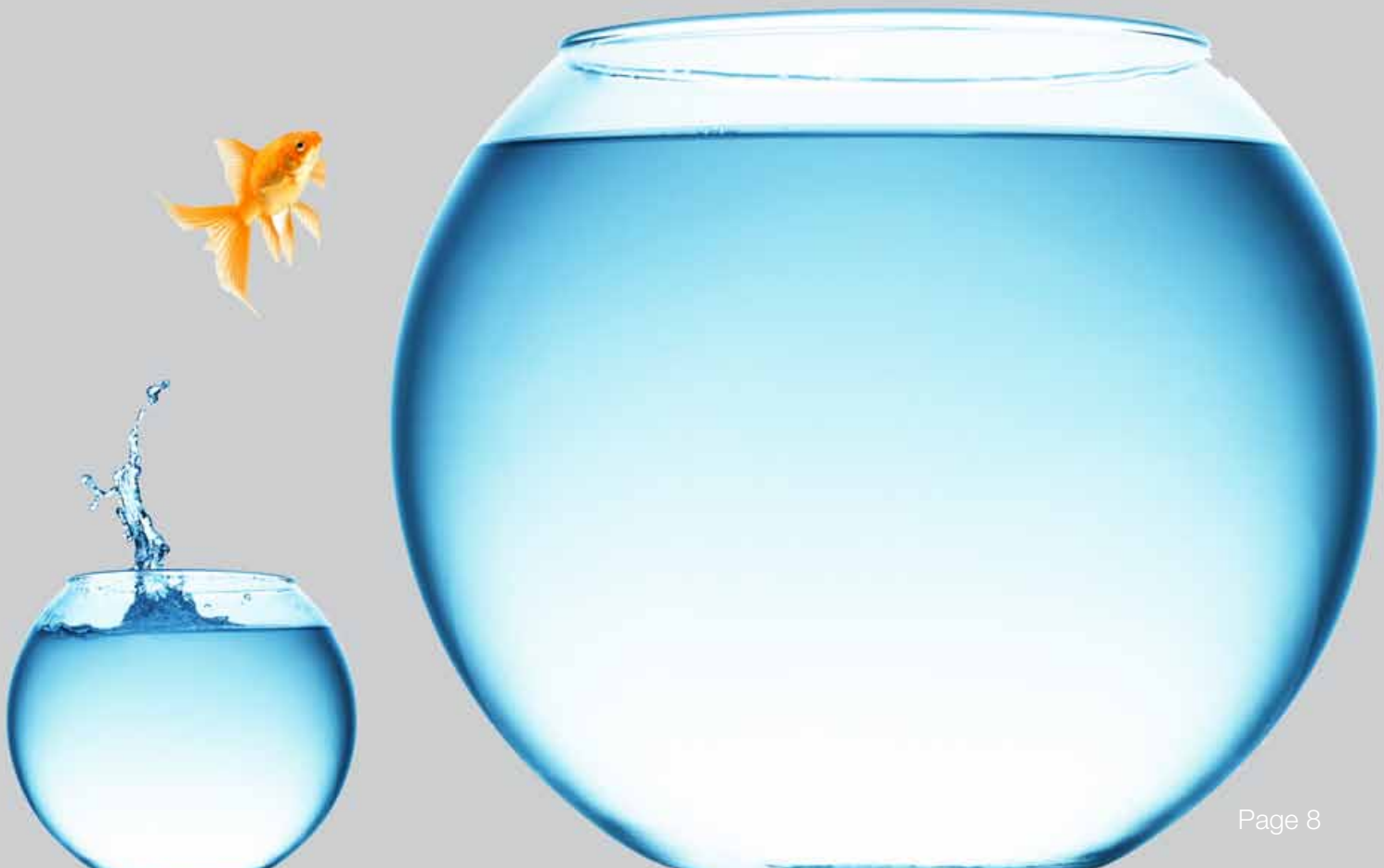
2.4. Why is CADWorx “Scalable”

CADWorx is a scalable solution because it combines ease of use and quick startup with full functionality and extensive integration and data sharing capabilities. This allows CADWorx’ advantages to be focused according to the project’s demands. Smaller, simpler, projects can take advantage of CADWorx’ rapid startup and small overhead needs to meet tight timelines and budgets.

Larger, more complex, projects, can take advantage of CADWorx’ automation and integration to reap downstream savings. And the best thing is that CADWorx’ additional capabilities can be implemented incrementally, as needed, to match the sophistication of your project or the skills of your staff – in contrast to the “all or nothing” approach that many competing applications impose. From small skids to large plants, multiple users can work together efficiently with greater ease and with superior results to tackle the most challenging and complex projects.

FUTURE DOES MATTER

The scalable solution that grows with you.



3. PURCHASING

3.1. What are the purchasing options?

Intergraph CADWorx may be purchased through our reseller network and direct from Intergraph CAS. To find your local reseller visit, www.intergraph.com/CADWorx or contact us at: Intergraph European Headquarters, Siriusdreef 2, 2132 WT Hoofddorp, The Netherlands, phone number +31 (0) 23 5666 666 or via [email](#).

3.2. What are Intergraph Global Network Partners (IGNP's)?

IGNP's are The Intergraph CAS Standard-bearer(s) around the world. They have been developed to work together as the local face of Intergraph CAS. Providing product sales and support in your local time zone and language. IGNP's have certified instructors and consultation specialist to help clients define and meet their requirements at all levels. The worldwide IGNP's work together to insure that Intergraph CAS multinational clients have access to the right products, training and consultation anywhere around the globe.

3.3. What is an Intergraph CAS Authorized Reseller?

Authorized Resellers are the local Intergraph CAS software experts who provide local sales and support to clients in their respective regions.

3.4. Are there FREE evaluations of CADWorx products?

Yes, free evaluations are available. The trial permits limited use of the product without the ability to print or save. The second option is a free 30-day full license. This license is for those interested in more applied evaluation of the product. The 30-day evaluation gives users unlimited restriction and access to all product features. For more information, [contact us](#).

3.5. Can CADWorx products be leased?

Yes, leases are available starting at one month.

3.6. Can a live presentation be given by the local reseller or by Intergraph CAS?

Yes, Intergraph CAS and its resellers have personnel that provide live product presentations that answer simple to complex technical questions and who understand project work flow specific questions. For more information, please get in touch with your local distributor, or contact us [here](#).

3.7. Can an online web demo be given?

Yes, online web demonstrations can be setup. Contact Intergraph CAS or your local reseller for more information.

3.8. What are the benefits to having CADWorx Maintenance?

Intergraph CADWorx Maintenance includes program updates, qualified technical support from the reseller and Intergraph CAS.

4. ONLINE RESOURCES

4.1. Does Intergraph CAS have an online Intergraph CAS CADWorx Blog?

Yes, you can find the Intergraph CAS Blog [here](#).

4.2. Where can I find online CADWorx discussion forums?

You can find an online CADWorx discussion forum [here](#).

4.3. Is there a CADWorx LinkedIn User Group?

Yes. Start sharing your experiences with Intergraph product owners and peers and get informed about all product news and job offers. Join the CADWorx Europe LinkedIn User Group [here](#).

4.4. How can customers stay in touch with Intergraph CAS?

To stay in touch with Intergraph CAS sign up for Intergraph CAS Insider Newsletter. To register follow this [link](#).



5. LICENSING

5.1. What is a Hardware Lock?

Hardware locks are software locking mechanisms used by many software vendors. These are small USB keys that attach to the USB port of the computer.

5.2. Will my hardware lock license expire after a year?

No, a Full License of CADWorx will never expire. When customers purchase CADWorx they receive a permanent license.

5.3. Can licenses be purchased for one user?

Yes, standalone licenses may be purchased for one user.

5.4. Can multi seat licenses be purchased?

Yes, multi seat licenses are placed on a network lock.

6. TECHNICAL REQUIREMENTS

6.1. What are the recommended system requirements for Intergraph CADWorx

- AutoCAD 2012, AutoCAD 2011, AutoCAD 2010, AutoCAD 2009
- 3.0 GHz Intel Pentium IV or greater
- Windows XP Professional or later
- 2 GB RAM
- 1600x1200 with true colour
- 128 MB or greater OpenGL-capable graphics card

6.2. With which Autodesk versions is Intergraph CADWorx compatible?

- AutoCAD 2012 (32 bit) / AutoCAD 2012 (64 bit)
- AutoCAD 2011 (32 bit) / AutoCAD 2011 (64 bit)
- AutoCAD 2010 (32 bit) / AutoCAD 2010 (64 bit)
- AutoCAD 2009 (32 bit) / AutoCAD 2009 (64 bit)
- AutoCAD 2008 (32 bit) / AutoCAD 2008 (64 bit)
- AutoCAD 2007

6.3. Is Intergraph CADWorx compatible with Autodesk vertical products?

- AutoCAD Mechanical 2012/2011/2010/2009/2008/2007
- AutoCAD Electrical 2012/2011/2010/2009/2008/2007
- Autodesk Mechanical Desktop 2009/2008/2007
- AutoCAD Architecture 2012/2011/2010/2009/2008, Autodesk Architectural Desktop 2007
- AutoCAD MEP 2012/2011/2010/2009/2008, Autodesk Building Systems 2007.1/2007
- AutoCAD Land Desktop 2012/2011/2010/2009/2008, Autodesk Land Desktop 2007
- AutoCAD Civil 3D 2012/2011/2010/2009/2008, Autodesk Civil 3D 2007
- AutoCAD Map 3D 2012/2011/2010/2009/2008, Autodesk Map 3D 2007

6.4. What is Intergraph CADWorx NOT compatible with?

- AutoCAD LT
- Autodesk Inventor
- Autodesk Revit

6.5. What operation system do I need?

- Microsoft® Windows® XP Pro,
- Windows Vista® Ultimate or
- Windows 7 (Minimum)

7. PLATFORM AND SYSTEM REQUIREMENTS

7.1. Autodesk Requirements?

For 32-bit AutoCAD

- Microsoft® Windows® 7 Enterprise, Ultimate, Professional, or Home Premium (compare Windows 7 versions); Microsoft® Windows Vista® Enterprise, Business, Ultimate, or Home Premium (SP1 or later) (compare Windows Vista versions); or Microsoft® Windows® XP Professional or Home edition (SP2 or later)
- For Windows Vista or Windows 7: Intel® Pentium® 4 or AMD Athlon® dual-core processor, 3.0 GHz or higher with SSE2 technology; for Windows XP: Intel Pentium 4 or AMD Athlon dual-core processor, 1.6 GHz or higher with SSE2 technology
- 2 GB RAM
- 1.8 GB free disk space for installation
- 1,280 x 1,024 true colour video display adapter 128 MB or greater, Microsoft® Direct3D®-capable workstation-class graphics card
- 1,024 x 768 display resolution with true colour
- Microsoft® Internet Explorer® 7.0 or later
- Install from download or DVD

For 64-bit AutoCAD

- Microsoft Windows 7 Enterprise, Ultimate, Professional, or Home Premium (compare Windows 7 versions); Microsoft Windows Vista Enterprise, Business, or Ultimate (SP1 or later) (compare Windows Vista versions); or Microsoft Windows XP Professional (SP2 or later)
- AMD Athlon 64 with SSE2 technology, AMD Opteron® processor with SSE2 technology, Intel® Xeon® processor with Intel EM64T support and SSE2 technology, or Intel Pentium 4 with Intel EM64T support and SSE2 technology
- 2 GB RAM
- 2 GB free space for installation
- 1,280 x 1,024 true colour video display adapter 128 MB or greater, Microsoft® Direct3D®-capable workstation-class graphics card
- 1,024 x 768 display resolution with true colour
- Internet Explorer 7.0 or later
- Install from download or DVD

7.2. Additional Requirements for 3D Modelling (All Configurations)

- Additional Requirements for 3D Modelling (All Configurations) Intel Pentium 4 processor or AMD Athlon, 3 GHz or greater; or Intel or AMD dual-core processor, 2 GHz or greater
- 2 GB RAM or more
- 2 GB hard disk space available in addition to free space required for installation
- 1,280 x 1,024 true colour video display adapter 128 MB or greater, Pixel Shader 3.0 or greater, Microsoft® Direct3D®-capable workstation-class graphics card

8. PRODUCT ENHANCEMENTS

8.1. How often does Intergraph CAS release a new update to CADWorx?

Intergraph CAS releases their new feature version of CADWorx once a year after the release of AutoCAD.

8.2. Is CADWorx always up to date with Autodesk's AutoCAD latest release?

Yes, after Autodesk releases AutoCAD, Intergraph CAS releases a compatibility release so users may continue benefiting from added AutoCAD features.

8.3. Who has access to the latest CADWorx updates and enhancements?

All users with current maintenance contract have access to the latest updates. For more information, [contact us](#) or set up an account on eCustomer [here](#). Click on "I'm a new user" at the bottom left.



In the bottom right of the text is a button to request a login, enter all required details, ignoring the U.S./Canada information at the top of the form and a login will be created for you.

Support

Process, Power & Marine (PP&M)



Any time new information technology is integrated into evolving IT systems, technical needs can arise. Regardless of where in the world a customer is located, Intergraph can provide implementation assistance, ongoing product upgrades, and technical support.

If you are a US or Canadian customer, please use the links below. International customers may contact our [local offices or affiliates](#).

- Go to [eCustomer](#) if you already have a login. If you do not have a user login, click [here](#) to request one. If you are a maintenance customer, you have access to our knowledge base, technical tips, and downloads.

Check out the new GetSmart! Blog

Read the GetSmart! blog produced by Intergraph's PP&M division. GetSmart! shares news and views of interest to people working in the PP&M industries.

9. GET INVOLVED WITH CADWORX

9.1. Can customers submit product enhancement requests directly to Intergraph CAS?

Yes, everyone may submit product enhancement requests. Intergraph CAS interacts with and listens to customers, then responds by developing new solutions and enhancing current products to address customers' needs in ways that improve their work processes. This customer-centric focus helps us to grow our product line to serve an ever broader base of users and applications, which in turn further increases opportunities for our clients to enjoy the benefits of interdisciplinary collaboration with other departments and organizations. To submit a request [contact us](#).

9.2. How are these enhancement request monitored?

Enhancement requests are evaluated and prioritized based on a given industry and market. Intergraph CAS prioritizes request based on the highest number of our users.

9.3. How do I get registered to beta test CADWorx?

Every year Intergraph CAS looks for beta testers if you are interested in participating please [contact us](#).

10. PIRACY PREVENTION

10.1. What can an Intergraph CAS legitimate customer do to help rise above those that pirate software?

Keep track of your software assets and help support Intergraph CAS against piracy. Intergraph CAS will issue your company an official letter indicative of how much we appreciate your business which then lists the number of licenses your company holds. Use this Intergraph CAS compliance letter and present it next time you bid for a project.

10.2. Our company wants a software certification letter, who do I contact?

To obtain a certification letter contact your local reseller or [Intergraph Europe](#).

