



THOMAS INDUSTRIAL NETWORK

Intergraph® SmartPlant® Reference Data Partner

Engineering and construction projects in the process, power, and marine industries can be quite complex, and the management of material reference data can be extremely challenging when there are thousands of products from hundreds of suppliers involved. With millions or billions of dollars invested into these projects, it is critical to use high-quality, accurate material reference data in your designs. The integrity of your project can be negatively impacted by limited dimensional descriptions, material photos instead of drawings, or information errors and inconsistencies.

To help you visualize your complex designs, Intergraph® has partnered with Thomas Industrial Network to help you achieve your objectives through highly-detailed, supplier-validated data.

Improve the Accuracy of Your Suppliers' Material Reference Data

Accurate and detailed supplier content is critical to delivering a design built with information integrity. Thomas Industrial Network has an extensive relationship with thousands of suppliers, and all material data provided by its suppliers is verified and approved, so the data is exact and updated on a continuous basis.

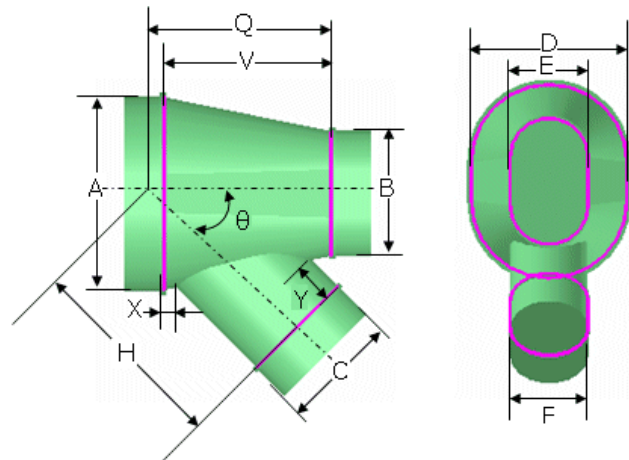
The data provided includes numerous product characteristics such as item and part numbers, weight, material, dimension, capacity, tolerance, length, speed, volume, radius type, thickness, outside diameter, size, output/power, bend angle, and many more. The level and accuracy of data provided by Thomas Industrial Network is unmatched by any other sources.

Provide Accurate Data to the SmartPlant 3D Platform

Intergraph's partnership with Thomas Industrial Network reduces the risk of inaccurate data by providing you with product data validated by the supplier and formatted for use

within SmartPlant® Reference Data, which is then integrated and ready to use in the SmartPlant 3D design and modeling system. With increased accuracy in your suppliers' material reference data, this will positively impact your process through:

- Increased productivity to project completion
- Improved work planning
- Effective and efficient supplier communication



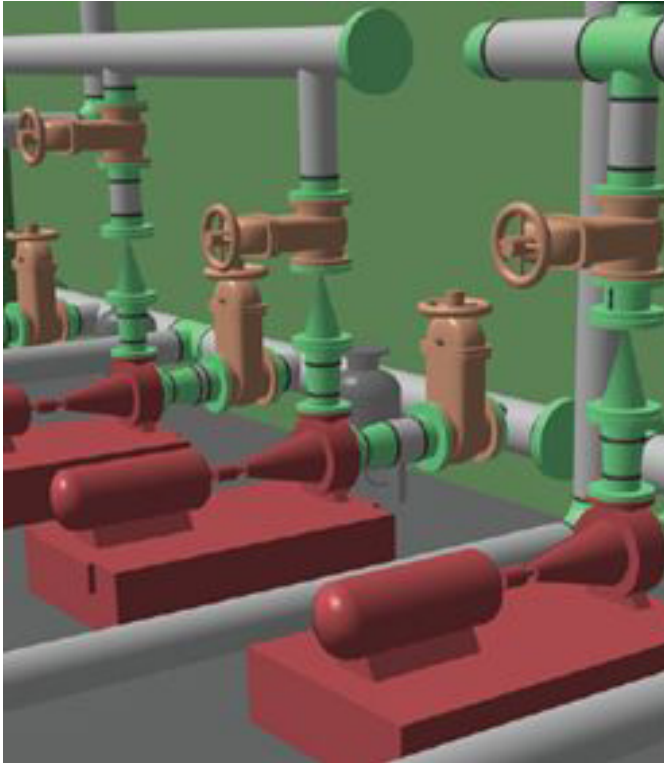
A=Width
 B=Width2
 C=Branch Width
 D=Depth
 E=Depth2
 F=Branch Depth
 theta=Angle
 X=1inch
 Y=2inch

$$V = \frac{C}{\sin\theta} - \frac{A-B}{2\tan\theta} + 2$$

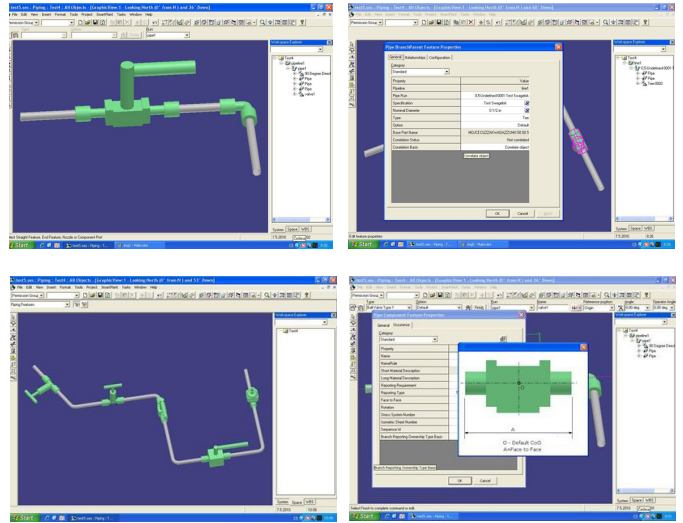
$$Q = \frac{A-B}{2V\tan\theta} + \frac{B}{2\tan\theta} + \frac{C}{2\sin\theta} + 1$$

$$H = \frac{A-B}{2V\tan\theta} + \frac{B}{2\sin\theta} + \frac{C}{2\tan\theta} + 2$$

Thomas Industrial Network provides detailed product data that is up-to-date and factually verified by the manufacturer



Ready to use in the SmartPlant 3D design and modeling environment



Get access to high-quality, manufacturer-verified data within the Intergraph system

Benefits

Designing with precise and detailed data for all materials and geometries is critical to your success. The benefits of Intergraph's partnership with Thomas Industrial Network include:

- Detailed product data that is up-to-date and factually verified by the manufacturer
- Technically rich and exact data
- Accurate part number generation
- Every available material attribute

ABOUT INTERGRAPH

Intergraph is the leading global provider of engineering and geospatial software that enables customers to visualize complex data. Businesses and governments in more than 60 countries rely on Intergraph's industry-specific software to organize vast amounts of data to make processes and infrastructure better, safer, and smarter. The company's software and services empower customers to build and operate more efficient plants and ships, create intelligent maps, and protect critical infrastructure and millions of people around the world.

Intergraph operates through two divisions: Process, Power & Marine (PP&M) and Security, Government & Infrastructure (SG&I). Intergraph

PP&M provides enterprise engineering software for the design, construction, operation, and data management of plants, ships, and offshore facilities. Intergraph SG&I provides geospatially powered solutions to the public safety and security, defense and intelligence, government, transportation, photogrammetry, and utilities and communications industries. Intergraph Government Solutions (IGS) is an independent subsidiary for SG&I's U.S. federal and classified business.

Intergraph is a wholly owned subsidiary of Hexagon AB, (Nordic exchange: HEXA B) and (Swiss exchange: HEXN). For more information, visit www.intergraph.com and www.hexagon.se.

