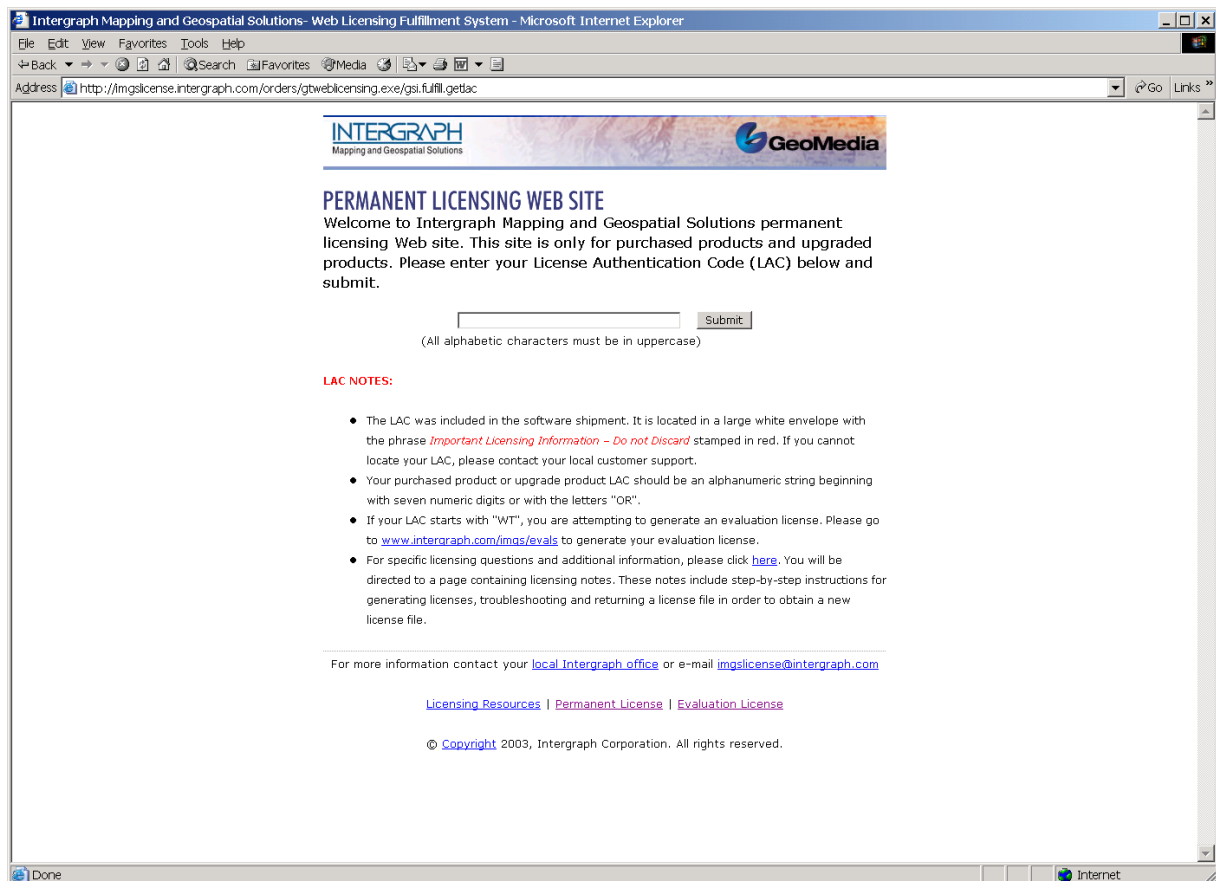


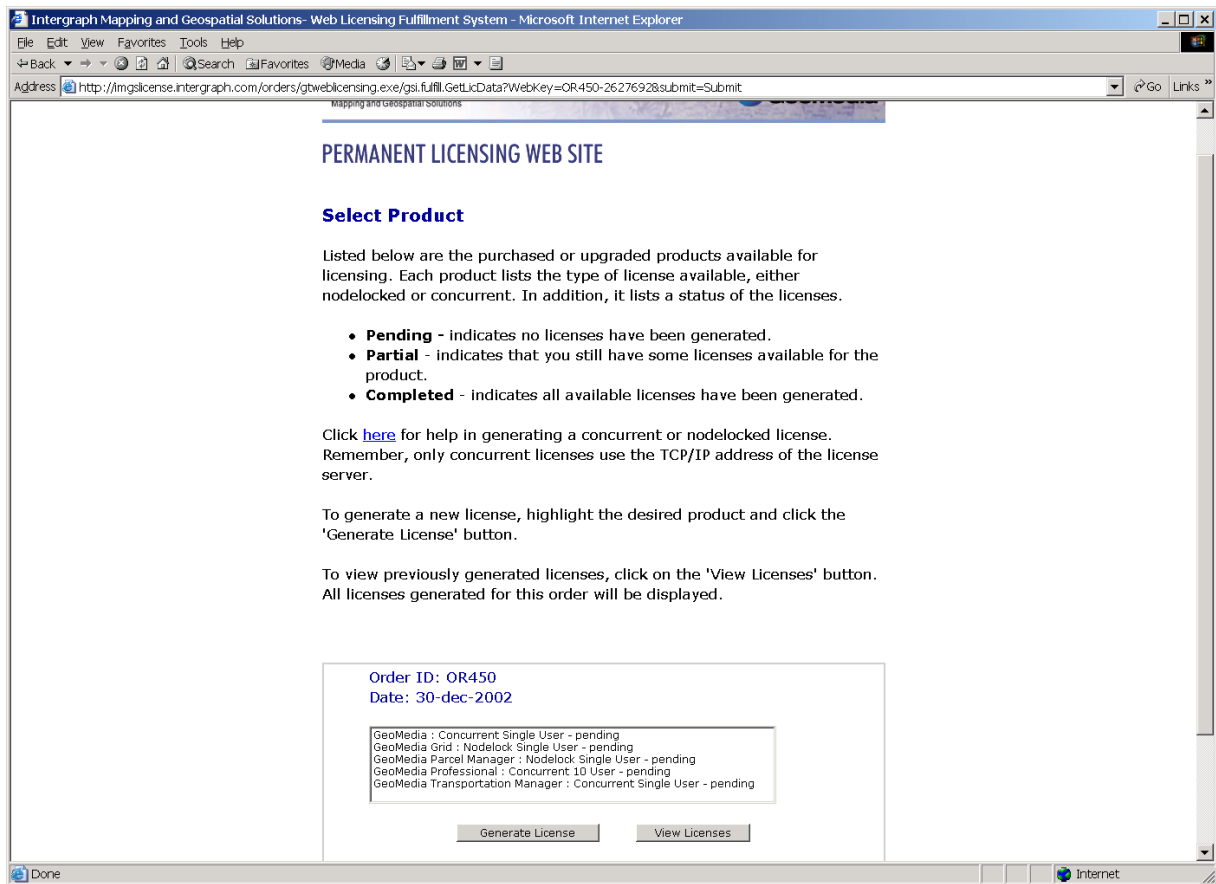
Generating a Permanent, Subscription or Partner NODELOCK LICENSE

Once you have your License Authentication Code (LAC) and your Host ID, go to www.intergraph.com/imgs/license to generate your permanent licenses, subscription or partner license.

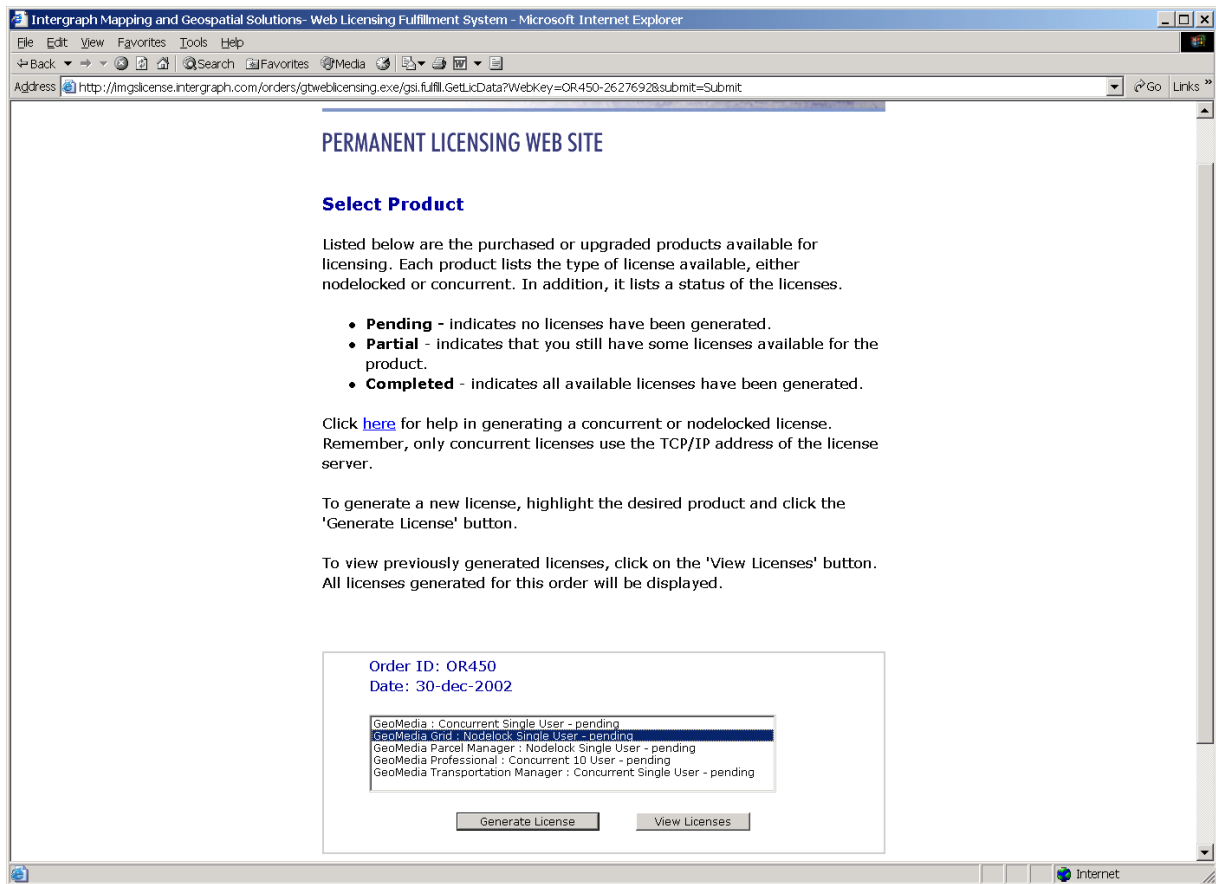


Enter your LAC exactly as it is shown in the LAC letter. Please make sure you do not have a space at either the beginning or the end or it will not work.

Once you have correctly entered your LAC, the next screen will display and it will show you which products you may generate licenses for. In the example below, there are four different license types available including GeoMedia node locked, GeoMedia Educational, GeoMedia 10-user pack, and GeoMedia WebMap (small site).

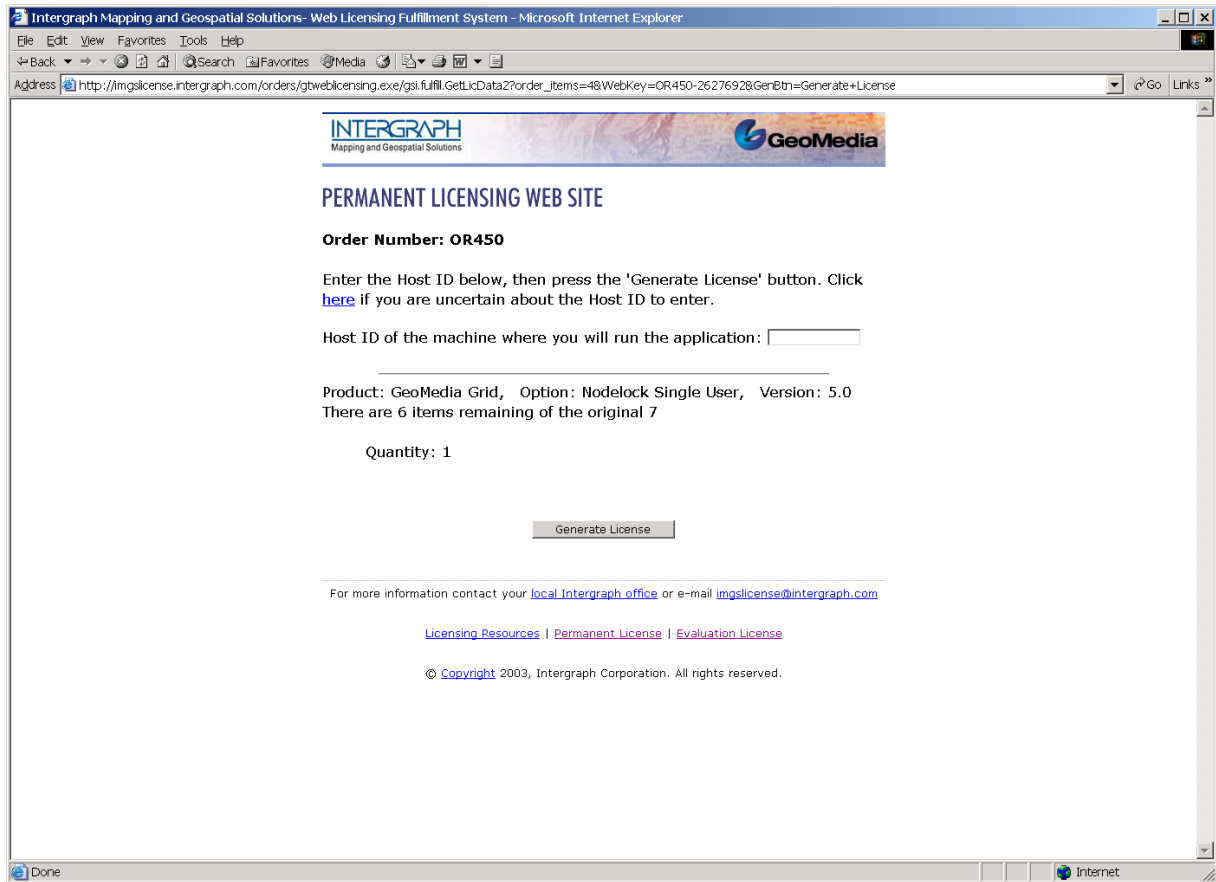


Select the product for which you are generating the license.

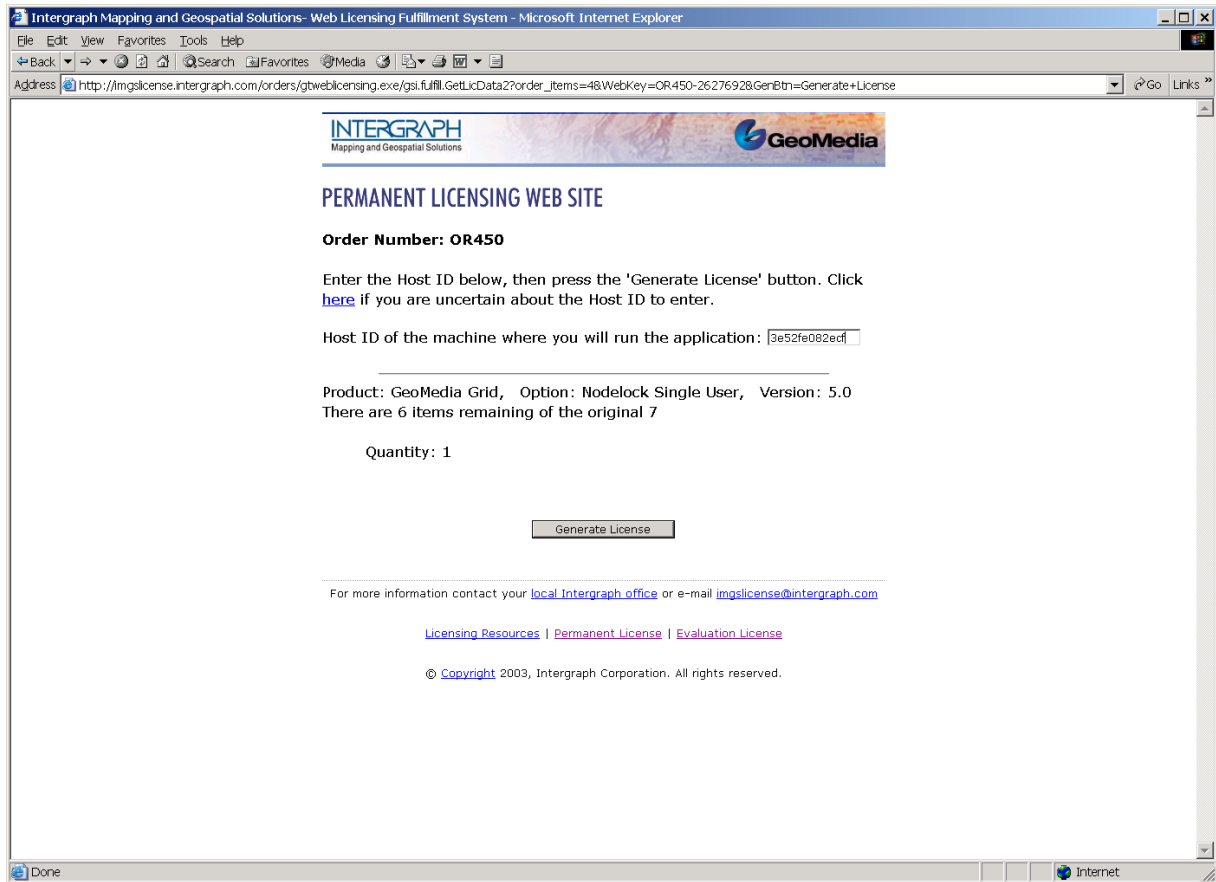


Next, click on Generate License.

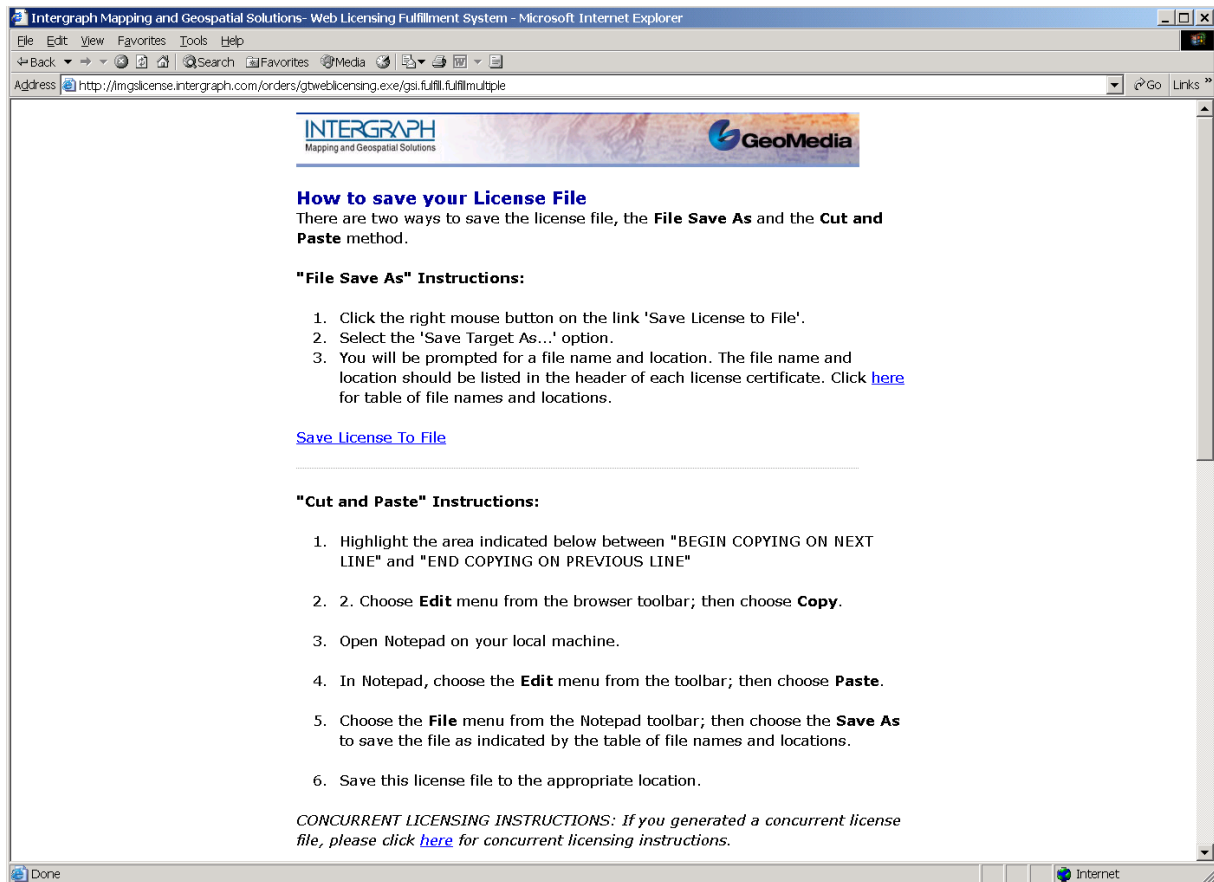
The next screen will prompt you to enter the Host ID and will show you how many licenses are still available for which you can generate licenses. In this example 6 of the original 7 licenses are still available.



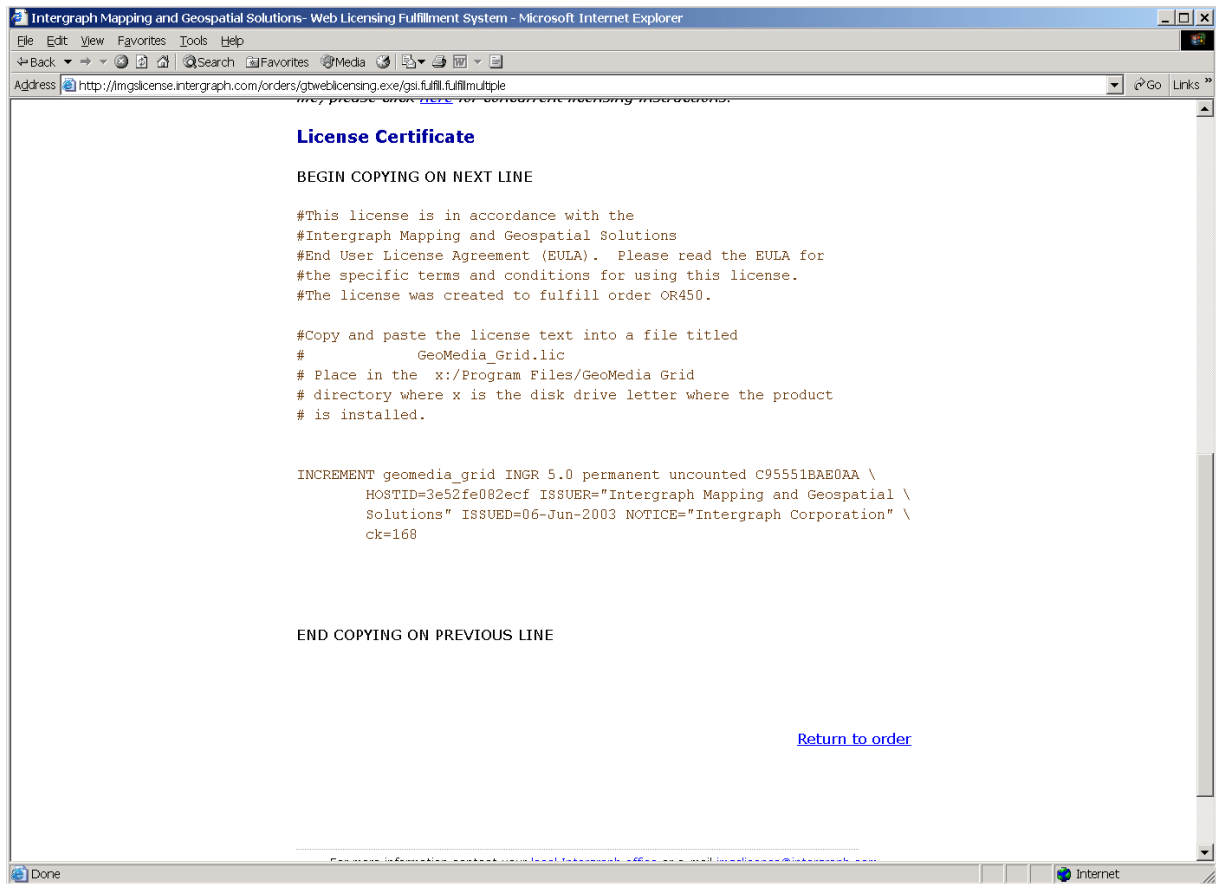
Once you have entered the Host ID, click on Generate License.



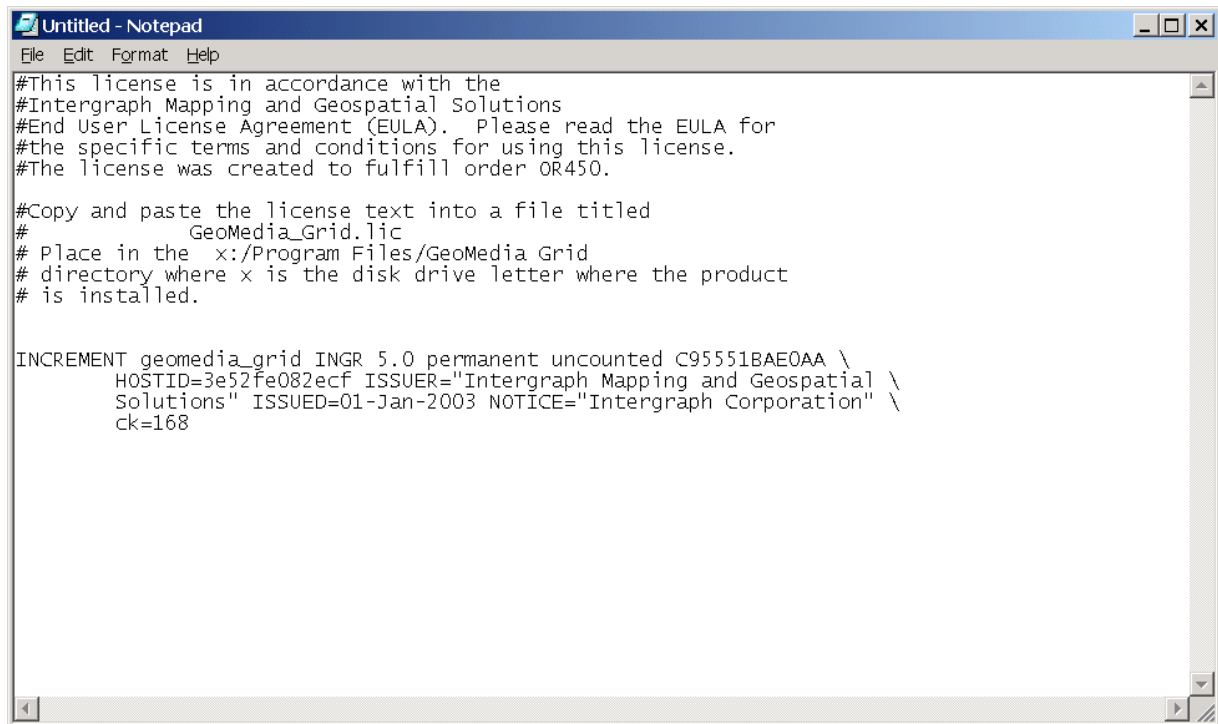
The license file screen is then displayed. Note there are two methods of saving the license file which cause the screen shot to be split in two. The first way is to use the **FILE > SAVE AS** command.



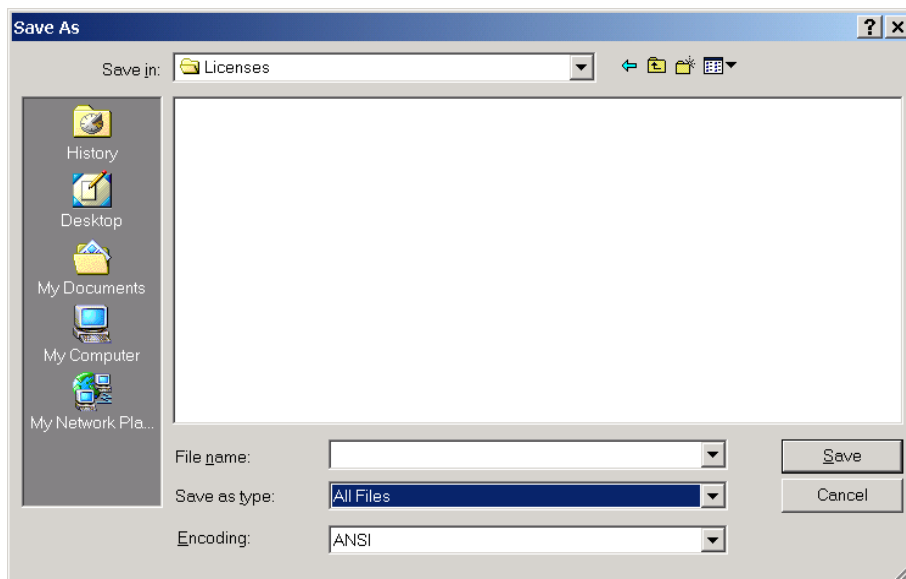
The second method is to copy and paste the license file to your machine using Notepad. Copy the text between the lines "BEGIN COPYING ON NEXT LINE" and "END COPYING ON PREVIOUS LINE."



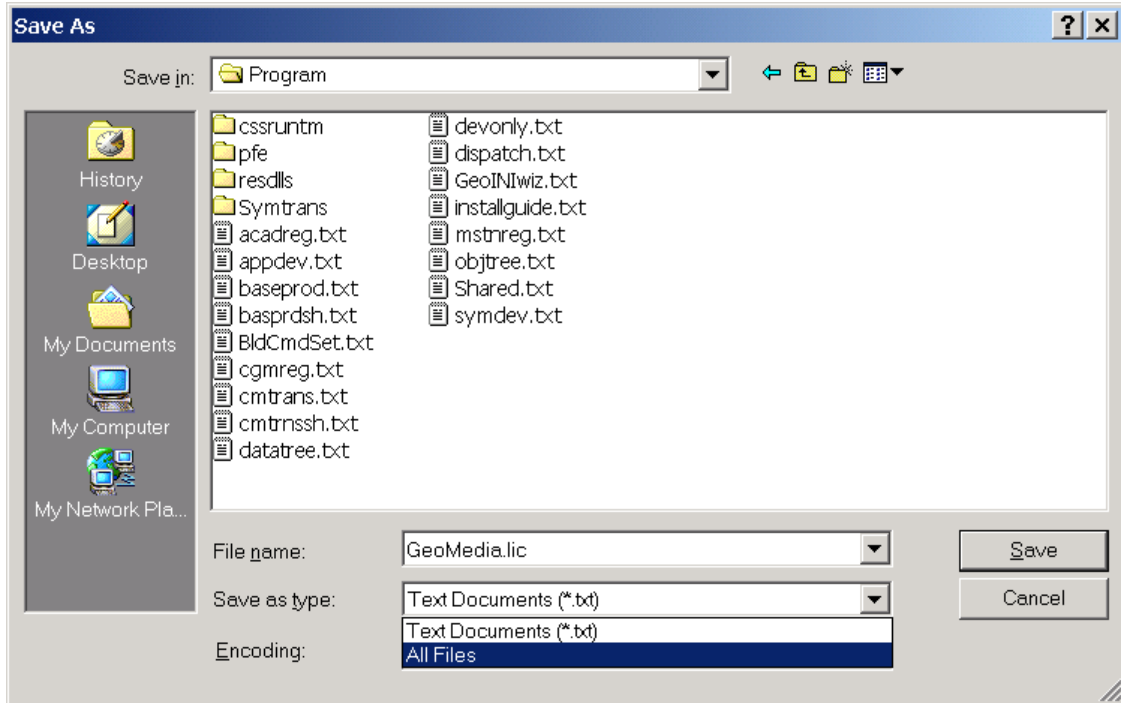
Go to START → Run and key in **NOTEPAD**. Once Notepad is displayed, paste the text into the empty notepad.



Notice the header information in the license file instructs you to save this file into a file named GeoMedia_Grid.lic and to place it in the Program Files/GeoMedia Grid folder. **REMEMBER** to use the **TO USE THE File → SAVE AS** command. If you have installed GeoMedia Grid in a folder other than the default Program Files/GeoMedia Grid folder, you will need to save the license file in the correct folder location. Some license files do not have headers to tell you what to name the license file or where to save it. However on the website there is a link to a file that shows all the filenames and locations. Make sure you click on the link if you need assistance. (See page 6 screen shot.)



You will need to change the Save as type to **All Files** as shown in the example above. Then key in the file name as indicated in the header of your license file.



You are now ready to run the product.