

# TerraGo License Manager Installation and Configuration Guide for WlmAdmin 8.1.1

---

Version 1.2.0



Map2PDF® and GeoPDF® are registered trademarks of TerraGo® Technologies, Inc. All rights reserved.  
SafeNet and Sentinel are either registered trademarks or trademarks of SafeNet, Inc. All rights reserved.  
Microsoft® and Windows® are registered trademarks of Microsoft Corporation. All rights reserved.  
Adobe®, Acrobat®, and Reader® are registered trademarks of Adobe Systems Incorporated. All rights reserved.  
All other products and trademarks are the property of their respective owners.

**Notice of Intellectual Property Rights**

TerraGo Technologies, Inc. has applied for a U.S. patent to cover methods and systems embodied in this software product.

## Contents

<b>Before you begin</b> .....	<b>5</b>
<i>About this guide</i> .....	5
<i>System requirements</i> .....	5
<i>TerraGo Technologies Technical Support</i> .....	5
<b>Installing TerraGo License Manager for WlmAdmin</b> .....	<b>7</b>
<i>Installing the TerraGo License Manager</i> .....	7
<i>Installing the Sentinel License Manager</i> .....	9
<i>Activating TerraGo License Manager</i> .....	10
<i>Obtaining the license file from TerraGo</i> .....	12
<b>Adding the TerraGo License File to WlmAdmin</b> .....	<b>13</b>
<b>Activating your concurrently licensed TerraGo product</b> .....	<b>15</b>
<b>Checklist</b> .....	<b>17</b>



## Before you begin

This guide is intended for the persons installing and activating the TerraGo License Manager and adding the TerraGo license file to the WlmAdmin application.

We recommend that you have a working knowledge of your Microsoft® Windows® operating system and its conventions, the computer on which you plan to install TerraGo License Manager as well as the WlmAdmin application.

You must have full Administrator rights to install and activate TerraGo License Manager.

## About this guide

The sections in this guide are presented in the order in which you will gain the most benefit. You must first install and activate TerraGo License Manager. You must then go to the TerraGo website to obtain the license file for the concurrently licensed product you purchased. Using the WlmAdmin application you must install the license file to a server. Finally, you must install and activate the TerraGo product on each machine that will use the concurrent license.

## Use this guide online

Should you choose to view the guide online, you can use the table of contents and the Bookmarks in the left pane of the Adobe® Acrobat® / Adobe Reader® application to navigate to specific topics. You can use the Find feature (Ctrl + F) to locate particular words or phrases.

## Print this guide

Should you choose to print the guide, you can use the table of contents and index to obtain the page numbers of specific topics.

## System requirements

Refer to the SafeNet documentation for system requirements at <http://www.safenet-inc.com>

## TerraGo Technologies Technical Support

Support@TerraGoTech.com

+ 1.678.391.9666

+ 1.866.453.1609 Option 2 (U.S. Toll Free)

+ 1.678.391.9701 (FAX)





## Installing TerraGo License Manager for WlmAdmin

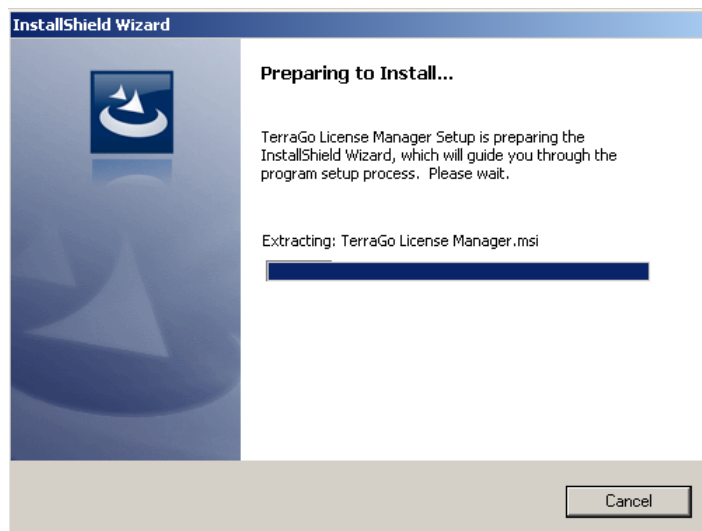
TerraGo License Manager uses SafeNet's Sentinel technology to control how TerraGo applications are deployed and used; therefore, the installation program installs both the TerraGo License Manager and the Sentinel License Manager. At the end of the installation program, the TerraGo License Manager appears through which you can immediately activate the application.

---

### Installing the TerraGo License Manager

Download the **TerraGo\_License\_Manager.exe** to the server on which you plan to use the WlmAdmin application.

Double-click the executable to start the installation program.



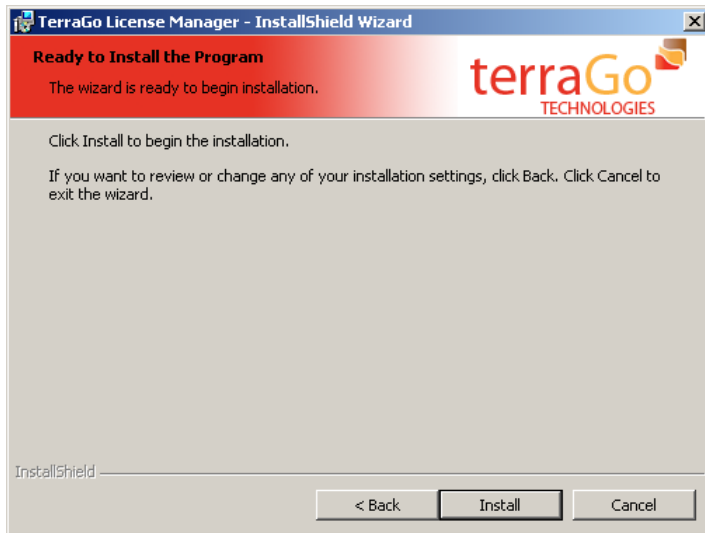
In the *Welcome* dialog box, click **Next**.



In the *License Agreement* dialog box, read and accept the terms of the license, and then click **Next**.



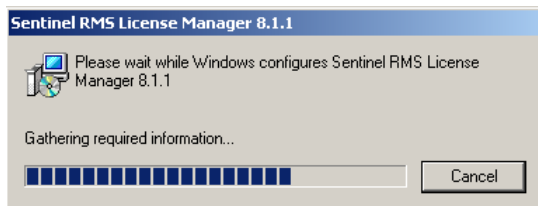
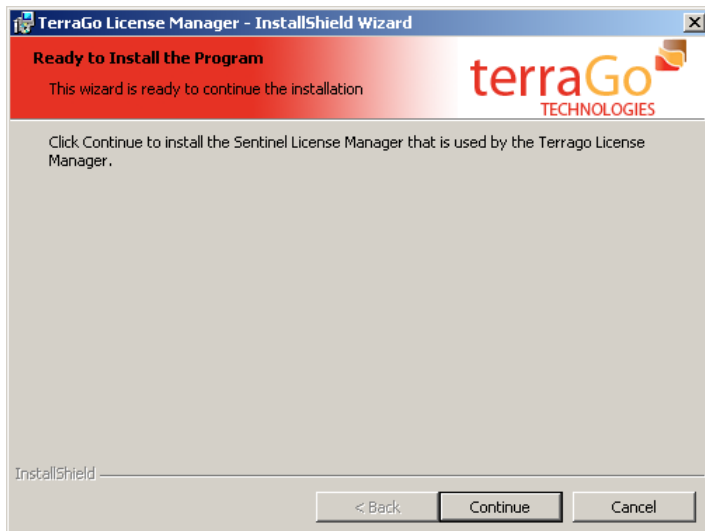
In the *Ready to Install the Program* dialog box, click **Install**.



The installation program completes the TerraGo License Manager installation and prepares for the Sentinel License Manager installation.

### Installing the Sentinel License Manager

In the *Ready to Install the Program* dialog box, click **Continue** to begin the Sentinel RMS License Manager 8.1.1 installation.



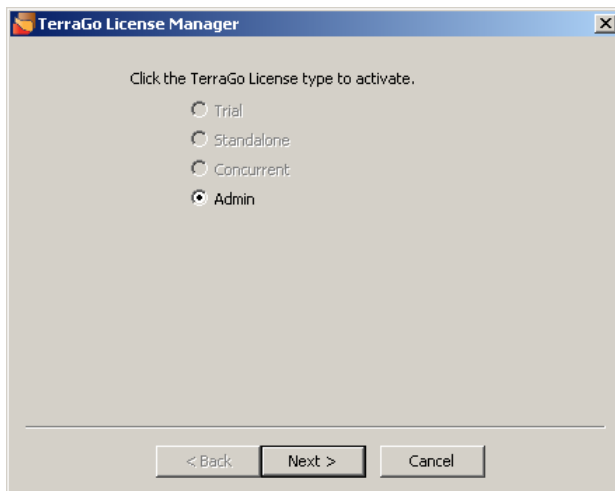
The installation program completes the Sentinel RMS License Manager installation.

Click **Finish**.



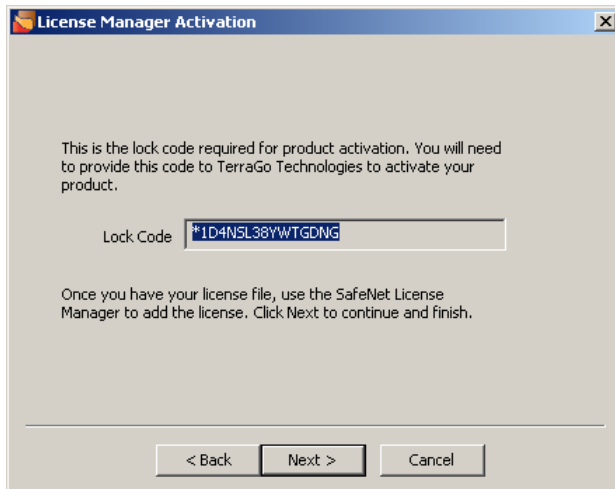
## Activating TerraGo License Manager

The *TerraGo License Manager* dialog box appears through which you can activate the **Admin** license. Click **Next**.

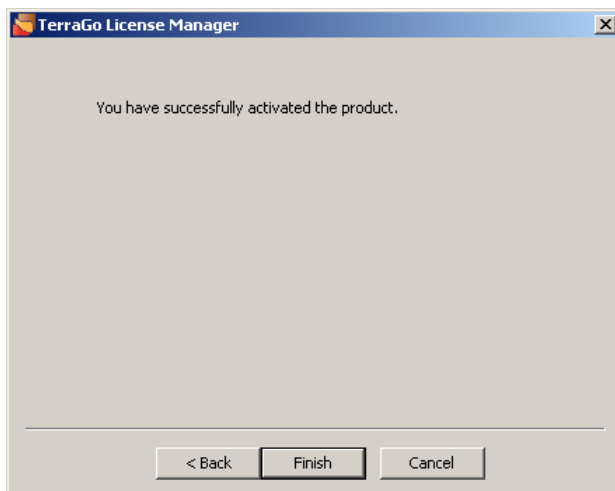


The *License Manager Activation* dialog box provides the **Lock Code**. You need the lock code and the authentication code that you received from TerraGo to obtain your license file. Press **Ctrl C** on your keyboard to copy the lock code to your *Clipboard*.

Click **Next**.



Click **Finish**.



Follow the instructions on the next page to obtain your TerraGo license file.

## Obtaining the license file from TerraGo

Go to **<http://www.terragotech.com/support/activate>**

Click the radio button adjacent to the product for which you want to activate a concurrent license, then click **Continue**.

In the **Contact Name** text box, type the name of the person who will be using the WlmAdmin application.

In the **Authorization Code** text box, type the authorization code that you received from TerraGo.

In the **Lock Code** text box, press **Ctrl V** on your keyboard to paste the copied lock code from your *Clipboard* to the text box.

Click the **Concurrent** radio button, then click **Activate License**.

Click the **Click to download license file** hyperlink.

Save the license text file to a location on your server. Make note of the location.



The location where you save the license file must have write access and must be a location where the file will not be moved or deleted.



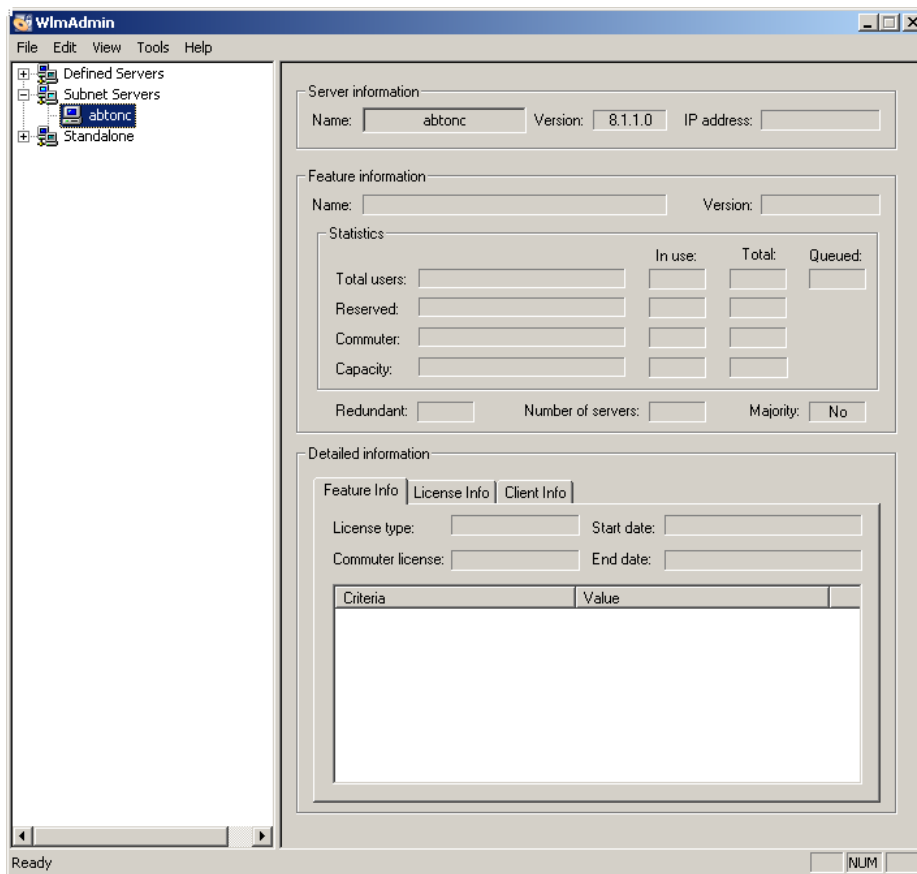
## Adding the TerraGo License File to WlmAdmin

You can use the WlmAdmin application to monitor your TerraGo licenses and the license users. You can view the licenses being serviced and license-specific information.

From the **Start** menu, click **Programs > TerraGo Technologies > TerraGo License Manager > TerraGo License Manager**.

The *WlmAdmin* window appears. Use this window to install the TerraGo license file to your server.

Expand **Subnet Servers**.

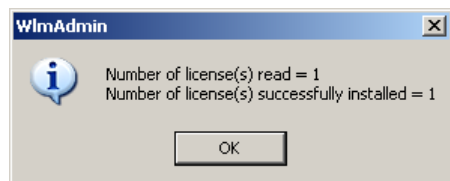


Right-click the server on which you want to install the TerraGo license file, then click **Add Feature > From a File > To Server and its File**.

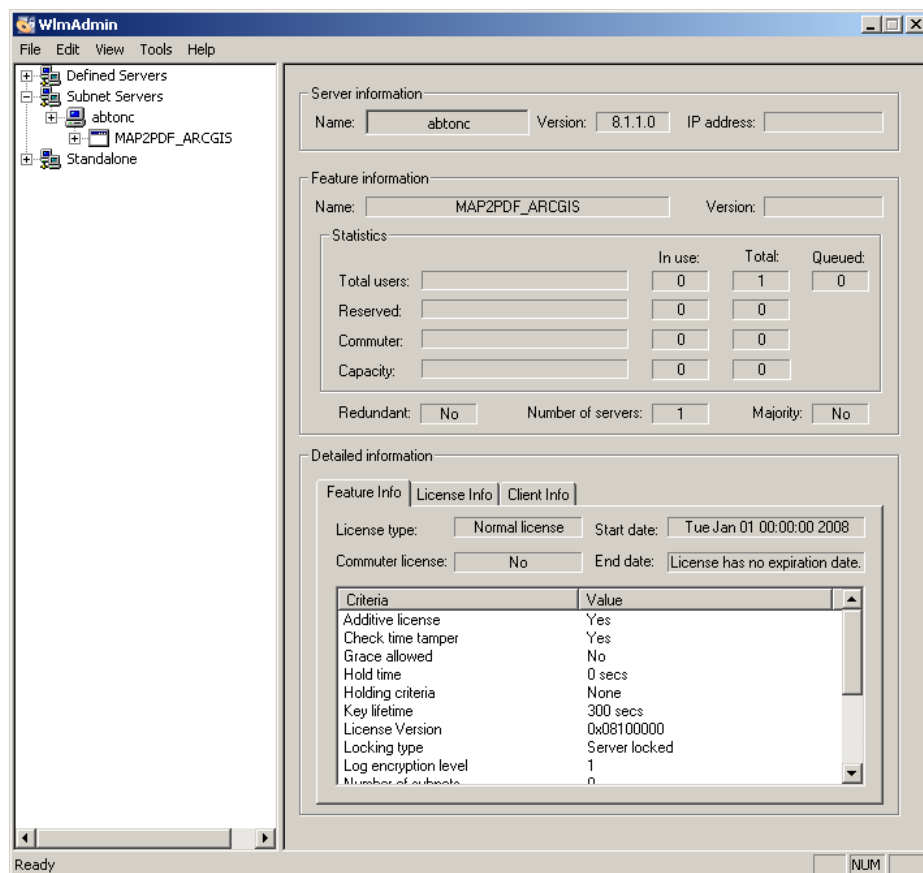
In the *Open* dialog box, navigate to the folder in which you saved the license file.

Select the file and then click **Open**.

At the prompt confirming the installation of your license file, click **OK**. You have successfully installed your license file to your concurrent licenser server.



Expand the concurrent license server. The TerraGo application for which you purchased concurrent licenses displays beneath the server. (The screen capture below indicates that the license file provided concurrent licensing for the Publisher for ArcGIS product, formerly known as Map2PDF for ArcGIS.)



The license details display how many and which users have checked-out a license as well as how many licenses are available.

Refer to the SafeNet WlmAdmin documentation for more information on product functionality at <http://www.safenet-inc.com>



## Activating your concurrently licensed TerraGo product

You must have Administrator rights on all of the machines on which you plan to install and activate the concurrently licensed TerraGo product.

---

Double-click the executable file to start the installation process.

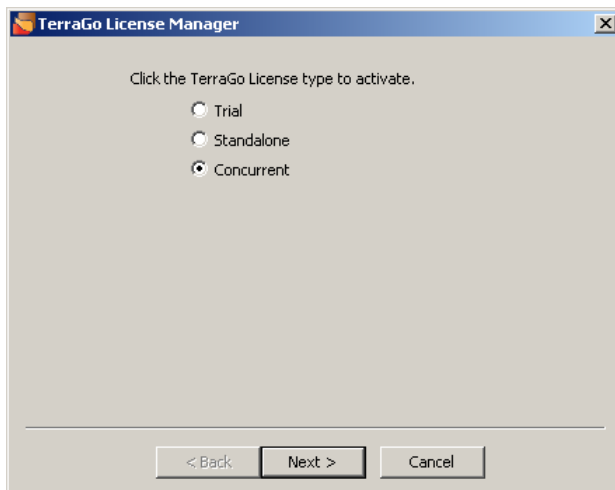
Follow the prompts to install the product.

Activate the product when the installation process completes.

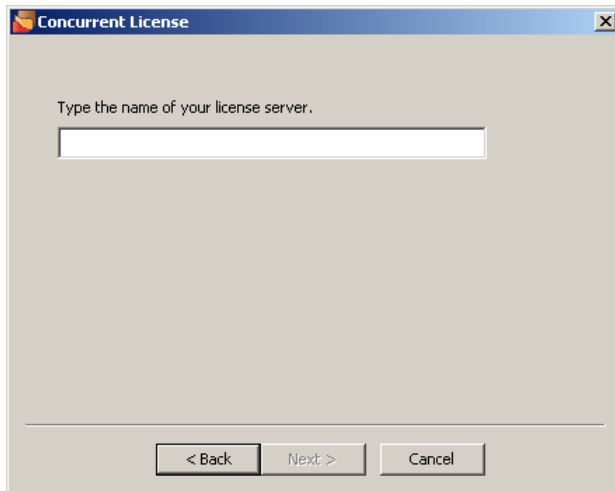


You can also activate the product from the **Start** menu. Click **Programs > TerraGo Technologies > (TerraGo product) > Activate (TerraGo product)**.

In the *TerraGo License Manager* dialog box, click the **Concurrent** radio button.

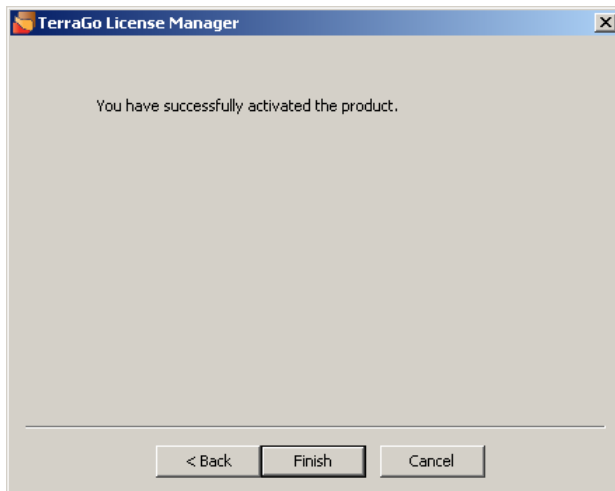


Click **Next**.



Type the name of the concurrent license server.

Click **Next**.



Click **Finish**.



If there are no available concurrent licenses when you launch the product, TerraGo displays a prompt to inform you of the status.



## Checklist

You must complete the following checklist to ensure that your users will be able to concurrently use the TerraGo product license.

---

Complete	Task
	Install TerraGo License Manager on your server. This installation includes the installation of the Sentinel License Manager.
	Copy the <b>Lock Code</b> from the <i>License Manager Activation</i> dialog box.
	Go to <b><a href="http://www.terragotech.com/support/activate">http://www.terragotech.com/support/activate</a></b>
	Click the radio button adjacent to the product for which you want to activate a concurrent license, then click <b>Continue</b> .
	In the <b>Contact Name</b> text box, type the name of the person who will be using the WlmAdmin application.
	In the <b>Authorization Code</b> text box, type the authorization code that you received from TerraGo.
	In the <b>Lock Code</b> text box, press <b>Ctrl V</b> on your keyboard to paste the copied lock code from your <i>Clipboard</i> to the text box.
	Click the <b>Concurrent</b> radio button, then click <b>Activate License</b> .
	Click the <b>Click to download license file</b> hyperlink.
	Save the license text file to a location on your server.
	Using WlmAdmin, install the license file to your concurrent license server.
	Install and activate the concurrent TerraGo product license on all of the machines that will use the license.



