

# GeoLabel™ Professional

## Product Information

### Special points of interest:

- > High-quality output
- > Dynamic and static labeling modes
- > Automatic highway-shield placement
- > Stacking and font reduction options
- > Automated leader lines
- > Post-editing tools

## High-Quality Text Placement Engine for GeoMedia Desktop

### Key Features

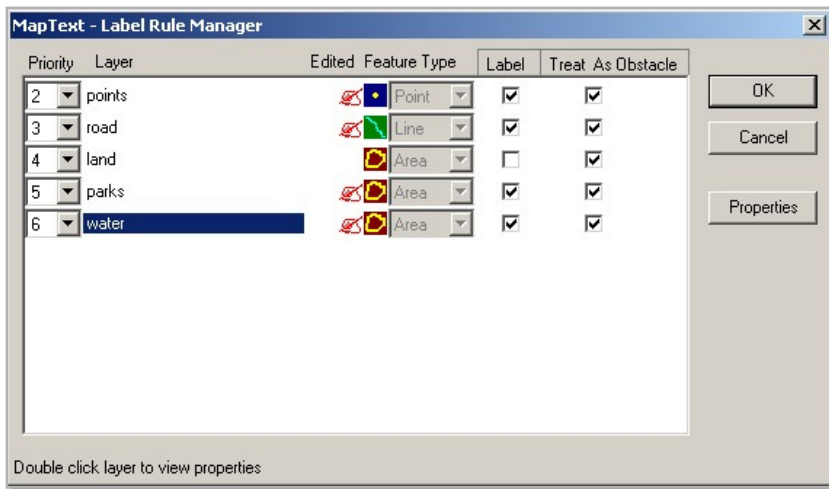
- Fully integrates with GeoMedia and GeoMedia Pro
- High cartographic quality output
- Optimized placement with obstacle avoidance across all feature layers
- Dynamic text placement mode for on-screen viewing – Optimal placement in window; no text cut-off at edges
- Static text placement mode for printed maps

### Configurable placement rules

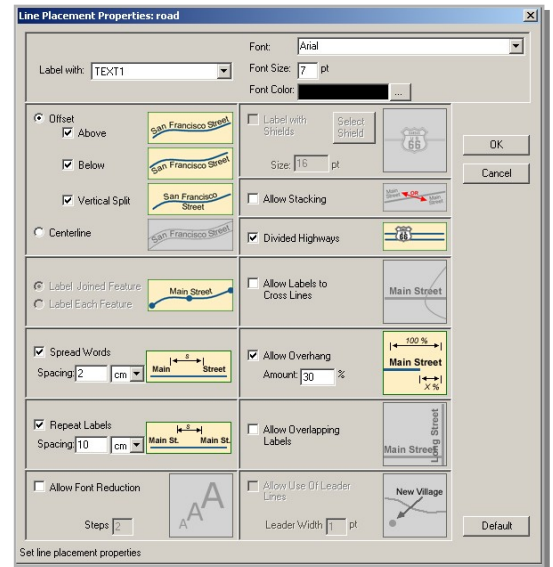
- **Line features:** Placing labels above or below following the shape of line feature, cased text placement, stacking, spreading or repeating words, highway shields, etc.
- **Point features:** Nine selectable text positions, stacking, allowing or disallowing labels to cross lines, etc.
- **Area features:** Text can be fully or partially inside the feature, placed horizontally along the dominant angle or along the dominant angle of the polygon, etc.

### User benefits

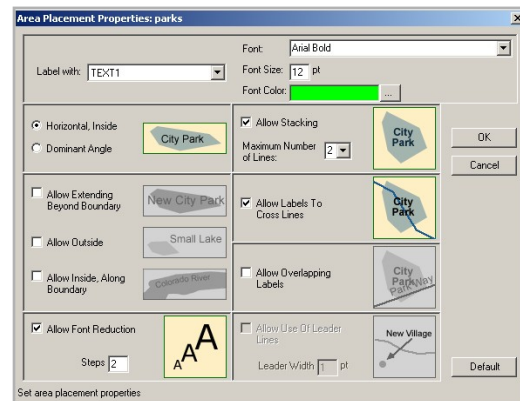
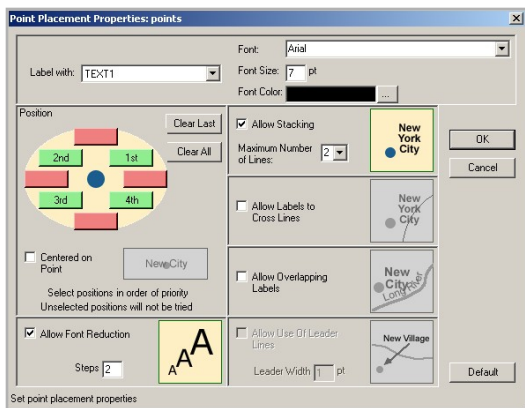
- Delivers high aesthetic quality maps for on-screen viewing or printing within the GeoMedia environment
- Intuitive user interface guarantees fast learning curve – minimal training required
- High placement percentage minimizes the need for post editing
- High and immediate return on investment



Double click layer to view properties



Figures: Label Rule Manager and Line, Point, and Area Control Panels of GeoLabel.



MapText, Inc.  
666 Plainsboro Road, Ste. 1025  
Plainsboro, NJ 08536, USA  
T. +1 609.716.7552  
sales@maptext.com

