

Integrated Administration and Control System for Bulgarian Agriculture



A new GIS solution supports the Integrated Administration and Control System's efforts to improve economic and social conditions in rural Bulgaria.

INTERGRAPH® PARTNER, DATECS SUPPORTS BULGARIAN AGRICULTURE WITH ONLINE GEOGRAPHIC INFORMATION SOLUTIONS

THE CHALLENGE:

Living and working conditions in Bulgaria over the coming years depend on the competitiveness of the agriculture and forestry industries. As a new member of the European Union (EU) the Bulgarian government places a high priority on restructuring its agriculture holdings. In the interest of economic growth, the EU's Phare programme provides economic aid to central and eastern European countries. The Integrated Administration and Control System (IACS) manages financial aid distribution in Bulgaria's agricultural and forestry sectors. The IACS determines aid allocations for arable crops, beef and veal, and other farm output. It also manages farm production in the mountains, hills and other areas of Bulgaria.

To ensure the success of the IACS, Datecs led a consortium to develop and supply an information system for the organisation. The company provides EU clients with services in the fields of geographic information system (GIS)/mapping data conversion services, multilingual data entry and software development of GIS/mapping applications and Internet solutions. Datecs' partners in the project included Technologica and Insyst Services. The system was needed to support the government's distribution of 400 million euros annually to Bulgarian farmers, and to help farmers meet EU requirements. The integrated system would be required to manage enormous amounts of data, including 110,000-square kilometres of orthophoto images and land parcels.

THE PROJECT OBJECTIVES:

- Develop an information system containing nationwide geospatial data that can be accessed by 300 users concurrently via the Web
- Integrate data from government, Ministry of Agriculture and Payment Agency (PA) sources
- Store, compare, import and export large quantities of data and aid applications
- View, edit and print geographic information online

PROFILE:

Name: Payments Agency (PA), Ministry of Agriculture and Food, Bulgaria

The PA is responsible for the management of the Integrated Administration & Control System (IACS) and all activities connected with EU-supported funding programs for Bulgarian farmers. The agency employs more than 1,500 qualified staff.

WEB SITE: <http://www.DFZ.bg>

KEY BENEFITS:

- Accommodates 1,000 concurrent users – more than 300 of them working with GIS/GPS applications
- Offers complete coverage of land parcels and orthophoto images
- Flexibility enables complex GIS data to support future development

PRODUCTS USED:

- GeoMedia® WebMap Professional

THE SOLUTION:

Making GIS data easily accessible to more than 300 concurrent users presents a significant challenge. For this large-scale project, the selection of the right technology was critical. The project was completed successfully using Intergraph® GeoMedia® WebMap Professional. Datecs also developed an in-house global positioning system (GPS) application with integrated workflow within IACS.

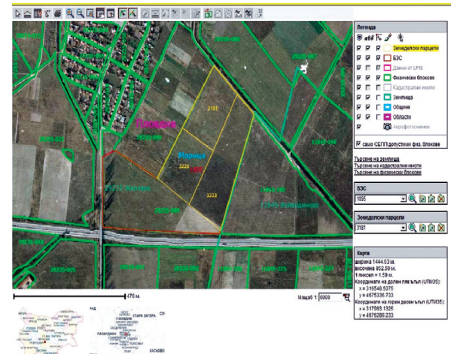
The IACS information system is built on an Oracle database and incorporates many different applications. The system supports IACS' efforts to improve economic and social conditions in rural Bulgaria. The GIS application enables visualisation of raster and vector data in different layers, which are carefully managed. The tools for updating parcels offer sophisticated editing functions such as vector snapping. In addition, the system creates a central database for land parcels and animal registration, while also expediting the processing of aid applications and payment.

THE FUTURE:

With help from Datecs, the PA will continue to support the IACS using its GeoMedia WebMap experience and Bulgaria's largest online GIS solution. The PA signed a three-year support contract with Technologica and Datecs to ensure optimal usage of the system.

"Our advice is to use GeoMedia WebMap technology with confidence,"

Evgeni Hinkov
Head of IT Department
Bulgarian Payments Agency



ABOUT INTERGRAPH

Intergraph is the leading global provider of engineering and geospatial software that enables customers to visualise complex data. Businesses and governments in more than 60 countries rely on Intergraph's industry-specific software to organise vast amounts of data into understandable visual representations and actionable intelligence. Intergraph's software and services empower customers to build and operate more efficient plants and ships, create intelligent maps and protect critical infrastructure and millions of people around the world.

Intergraph operates through two divisions: Process, Power & Marine (PP&M) and Security, Government & Infrastructure (SG&I).

Intergraph PP&M provides enterprise engineering software for the design, construction and operation of plants, ships and offshore facilities. Intergraph SG&I provides geospatially powered solutions to the defense and intelligence, public safety and security, government, transportation, photogrammetry, utilities and communications industries.

For more information, visit www.intergraph.co.uk

