

Security, Government & Infrastructure



G/Comms, Benefits

Communications companies, battling for market share in an industry faced with the effects of deregulation, competition, and new technologies, are requiring strategic approaches to network planning, design, and management. Accurate, up-to-date network information to manage network assets efficiently and support business processes is vital to staying ahead.

With G/Comms, Intergraph brings you the tools to locate and manage your network assets – helping you operate smarter and faster than the competition to deliver low-cost, high-quality services.

Next-generation Geospatial Resource Management

Designed to meet the demand for a more open, flexible, commercial off-the-shelf (COTS) software solution, G/Comms represents a key enabling technology within Intergraph's Geospatial Resource Management (GRM) environment of integrated systems. G/Comms enables communications companies to effectively design and maintain a complete telecommunications network model. In addition to providing a comprehensive solution for creating and maintaining a geospatial network facility model, G/Comms lets you analyze the model in a variety of ways, distribute information as needed, and interact with a variety of enterprise systems.

Integrated solution

A multidimensional solution, G/Comms integrates AM/FM/GIS applications with enterprise resource planning systems. G/Comms is designed to enhance workflows, perform network analysis, and automate network infrastructure design. Its Web-enabled capabilities and integration with enterprise resource planning solutions support business and engineering processes throughout the enterprise.

Through the automation of labor-intensive business and engineering processes, G/Comms radically transforms the service delivery process. With accurate and online network information, you can quickly assess the type of services your network can support in any particular geo-

graphic area. Additionally, G/Comms' rapid network design and analysis tools enable you to optimize technology deployment strategies and manage co-location. You have the ability to enter the market quickly and roll out competitively priced high-quality services.

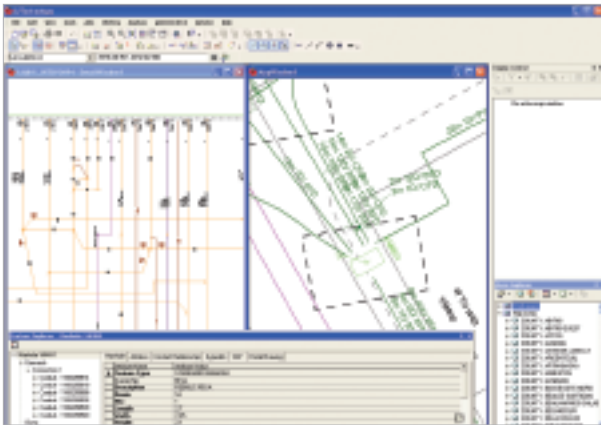
Benefits from a better support system

G/Comms provides the foundation for integrating many isolated operations support systems. As a single point of access, G/Comms provides a wealth of network information that delivers the results you expect and supports business processes throughout the enterprise. Key benefits include:

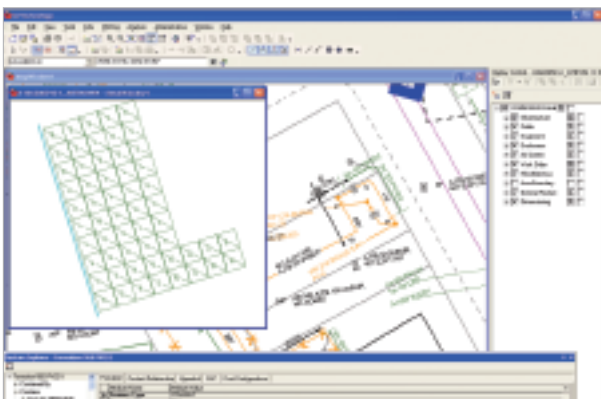
- Improve quality of service
- Retain your customers
- Reduce operations and maintenance cost
- Integrate corporate IT systems
- Respond quickly to customer queries online
- Deploy new services – quickly and efficiently
- Leverage engineering productivity
- Design better, faster, and cheaper
- Enable immediate network location, configuration, and utilization
- Manage co-location
- Standardize facility map symbology, color, font size and style, and line weight
- Reduce maintenance and restoration time
- Forecast and plan
- Reduce engineering analysis and loop makeup times

Rapid implementation

Traditional AM/FM/GIS applications have taken years of implementation and design, postponing usability and return on investment. Based on industry best-practice standards, G/Comms comes with significant out-of-the-box functionality that supports fast-track or incremental project implementation schedules, reducing the costs



G/Comms has the look and feel of your other Windows applications, and it provides the industry's most advanced outside and inside plant management tools.



G/Comms manages ducts, duct containment, and duct spaces through visual representation and business rules.

and time associated with traditional program delivery and deployment. Intergraph's QuickStart program helps get you into production and start realizing the benefits of GRM quickly.

Advanced technology

G/Comms defines a new standard for functionality, open database access, and performance. Advanced geospatial capabilities enable G/Comms to provide the highest level of business and engineering information across the enterprise. Numerous innovations, such as use of a single, relational database for storing all geospatial data, and the unprecedented speed provided by the Dynamic Display Cache (DDC) deliver fast and accurate graphic displays.

Stable support, scalable solutions

With more than 500 companies around the world using our solutions, Intergraph is the world leader in providing communications companies with the tools needed to guarantee performance and stability, and to improve customer service. Our industry-proven GRM solutions are built on industry best practices, enabling fast start-up and minimal customization costs. And GRM solutions are completely scalable, letting you add components and functionality as you need them.

Intergraph's GRM software and work environment, uniquely designed for the communications industry, optimizes user productivity. We offer true facility life cycle management capabilities, including automated mapping and records management, engineering and construction support, work order processing, map and drawing generation, data access, spatial analysis, and workforce management.

For more information, visit us on the Web.
www.intergraph.com/sgi